

WINCROSS®

What's New Guide

Version 16



Version 16

Copyright 1994–2016, The Analytical Group, Inc.

Editor: Harvey Pollack

All rights reserved. No part of this book may be reproduced in any form or by any electronic means, electronic or mechanical, including photocopying, scanning, recording or any information storage and retrieval system, without the express permission of The Analytical Group, Inc.

Table of Contents

New Feature Highlights for Version 16	5
TAG Client Portal/TAG Drive	8
New Generate Filtering Column Option for Excel	10
Copy and Paste Banner Columns from Clipboard	12
Regression Module	12
Significance Testing Added to ExpressTabs.....	13
ExpressTabs, Express Tables from Variable Data and Banner Templates from Variable Data	15
Right-click Context Menu Data Tab Options	16
Spell-checking for the Data Grid	17
Reorder Variables	17
Specify Variable Type and Format for New Variables	17
Round Selected Data to 'n' Places.....	18
Saving Data File from Glossary, Simple Weighting, Sample Balancing and Factor Analysis	19
Create a New Data File	19
Close Job and Data Files	20
Quick Tools.....	21
Increased Memory Capacity.....	22
New Maximums for Record Length and Number of Variables	22
New Square Root Function of the CALC Statement.....	22
New SUB/ENDSUB Feature	23
DECLARE New Variables in the Glossary	23
Implicit ASSIGN instruction	24
Multiple Job Logos and Logo Placement Options.....	25
Report Viewing Format Changes	26
Excel Options Organized in Tab View.....	27
New Table of Contents Options for Excel	28
Banner Column Width for Excel Reports	29
New Show Job File Definition View Check Box	30
Table Filter for Express Tables from Variable Data	31
Reverse Scale	32
Use Variable Label from First Selected Variable as Table Title.....	32
Net Using Code Values	33
Word Wrap and Implicit Spell-checking for Row Text in the Express Table Editor	34
Apply Table Options to Other Tables in the Express Table Editor.....	35
Get True Nets Using Indexed Variables.....	36
New Filter Type of Net Total (Indexed) for Tables Using Indexed Variables	37

Assign Rows to Groups	38
Apply Across NETs and SUBs	39
Mean Number of Mentions	40
New Frequency Report Type Options	41
New Frequency Chart Type Options	42
Additional Frequency Statistics Options.....	43
Double-click a Single Variable for a Quick Frequency Report	44
Double-click a Single Table for a Quick Report	45
Ignore Ranking	46
New Sample Balancing Options.....	47
New Factor Analysis Report Properties Option.....	48
Create Secondary Factor Groups in Factor Analysis.....	49
Enhanced Text Reports for Sample Balancing and Factor Analysis	50
Use Variables Defined or Declared in the Glossary.....	51
View Data File Information from Setup Glossary Variables	52
Save Variable-Type Data Files to Other Formats	53
Median Statistic Option Added for Banner Columns.....	53
Enhanced Text Banner Preview.....	54
Misspelling Alerts.....	55
New Character Maximum for Table Title, Subtitle and Footnote	55
New Symbols for Incrementing/Excluding Logic for VAR+/LOC+ Banners and Tables	56
New Symbols for Including Logic in Row/Column Statistics	57
New Symbols for Including Logic in Volumetric Rows	57
Enter Glossary Statements Without Regard to Case.....	58
Data Transformations Applied Report Status.....	59
Compatibility with Latest Version of SPSS®	60

What's New in WinCross Version 16

We are excited about the many enhancements in WinCross 16. Our Express features, from running simple tables, to creating tables and banners from your data file, will now work with all variable-type data. We are confident that the enhancements to our variable data grid will allow you to handle all of your variable and data changes within WinCross.

New Feature Highlights for Version 16:

- Our new **TAG Drive** cloud-based file storage lets you open and save your job, data and report files for access from anywhere.
- Change Excel display options without having to rerun tables using our new Excel filtering column.
- Reduce setup time for banners with the new copy and paste functionality for banner columns.
- Let our new **Regression** module answer your multiple regression analysis needs.
- Significance results are now at your fingertips with the addition of significance testing to our quick-and-easy **ExpressTabs**.
- Now that WinCross express features are no longer limited to just SPSS data, processing **ExpressTabs** and creating banners and tables is easier than ever.
- Create express frequency and statistical reports, split data into new variables, merge multiple variables into a single new variable, generate random values, fill missing values with means and spell-check selected cells from a simple right-click on the data grid for all variable-type data.
- You can easily change the order of variables in your data file with the addition of the **Sort Ascending by Variable Name** and **Sort Descending by Variable Name** options to the right-click context menu of the data grid.
- Save time and energy when you need to add records or variables to your data file now that you can specify variable type and format and copy records and variables from the Windows clipboard.
- Data decimal precision can be changed in a flash with the addition of **Round Selected Data to 'n' Places** on the data grid right-click context menu.
- Eliminate unnecessary steps for cleaning or merging data now that data saved by the **Glossary**, **Simple Weighting**, **Sample Balancing** and **Factor Analysis** retains the original field width for all variables.
- Create your own data file in WinCross with the addition of **New Data File** to the **File Menu** options.
- It is no longer necessary to leave that job and/or file open with the new **Close Job** and **Close Data File** options added to the **File Menu**.
- The new **Quick Tools** options provide a quick-and-easy way to calculate significance, statistics, frequencies and sample sizes.
- Increased memory capacity for 64-bit operating systems and new maximums for record length and number of variables provides greater WinCross processing capability.
- The new square root function of the **CALC** statement offers more row and column logic definitions.
- Added flexibility using the **SUB** command with the addition of **ENDSUB**.
- **DECLARE** new variables in the **Glossary** without the need to assign record/column locations or use **ADDLEN**.
- The **Glossary ASSIGN** instruction can now be implied for some syntaxes making it easier to use.
- **Enhanced Text Reports** can now be personalized with multiple logos and additional logo placement options.
- Exporting to Excel has been simplified with the addition of **Excel** to the options for **Report viewing formats** and the automatic launch of Microsoft Excel.
- **Excel Report Options** are now presented in a tab view with options organized by type.
- **Excel Formatting Options** offer even more flexibility for **Table of Contents** creation and worksheet names while creating a **Table of Contents** becomes the new WinCross default.
- WinCross now provides more control over banner column width for **Excel Reports** by respecting the column width specifications from the **Setup Banners** dialog for **Enhanced Text Reports**.

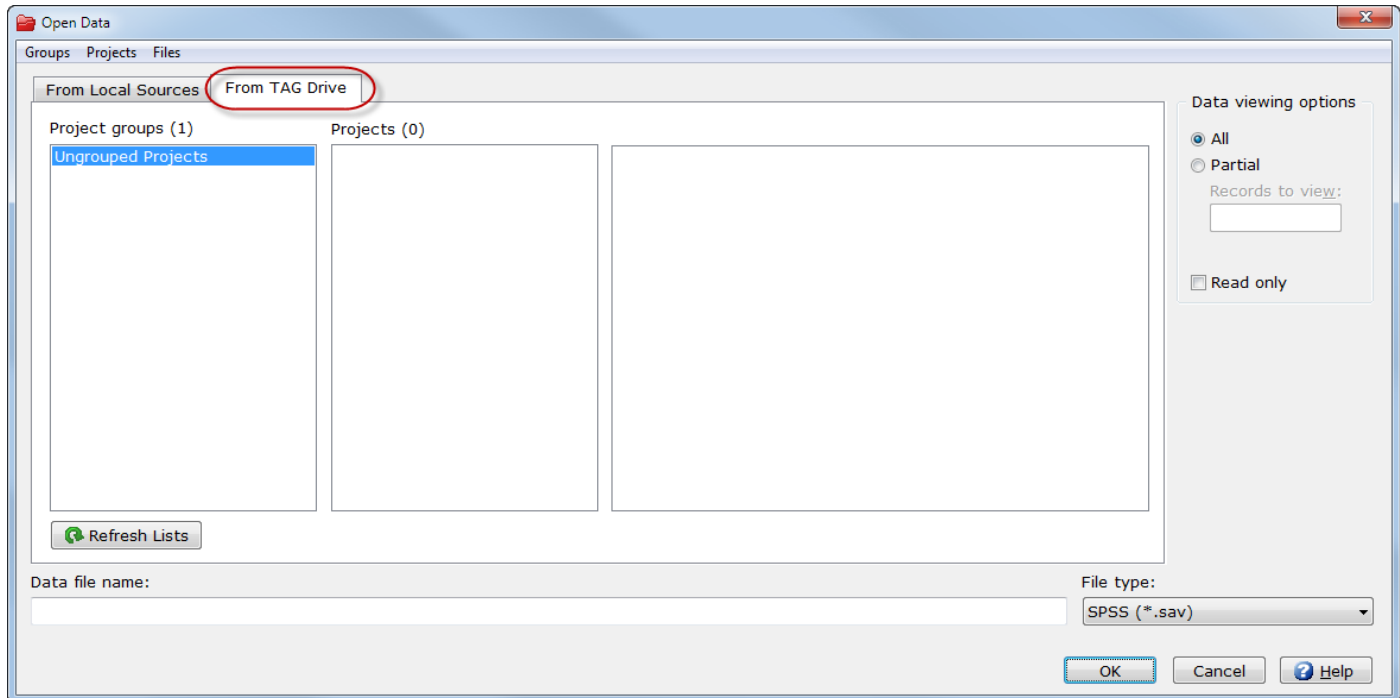
- Use the new **Show job file definition view** check box to display the **Job file definition** window or leave it disabled to display more tables on the **Express Tables from Variable Data** dialog.
- **Express Tables from Variable Data** now has its own time-saving **Filter** option allowing you to modify and auto-increment filter logic on multiple tables at once.
- New **Filter**, **Reverse scale**, **Use variable label from first selected variable as table title** and **Net Using Code Values** options of **Express Tables from Variable Data** provide even more time-saving table creation.
- You can easily double-check your **Row Text** for spelling errors in the **Express Table Editor** with the addition of the new **Word wrap** option and implicit spell checking.
- Save even more time creating **USE** tables in the **Express Table Editor** with the new **Also apply the table options to the selected tables** option on the **Apply to Other Tables** tab.
- Get true nets when using indexed variables with the new **IDXNET/ENDNET**, **IDX n** and **IDX-n** instructions for rows and the new **Filter type** of **Net Total (Indexed)** for table filters.
- Rows can now be grouped together under a programmed net when ranking is assigned providing greater row placement control.
- **NET**, **IDXNET** and **SUB** rows can now be included in threshold determination.
- You can now show the often-requested **Mean number of mentions** for both rows and tables.
- Additional frequency report options for **Statistical** and **Chart** representation provide another level of information at your fingertips.
- More statistical information is now available for your frequency reports with the addition of the **1st Quartile**, **3rd Quartile** and **Values to exclude from Statistics** options.
- Create quick reports by double-clicking either a single table using **Run|Tables** or a single variable using **Run|Frequency**.
- Added flexibility for running tables with the new **Ignore ranking** option.
- New **Sample Balancing** options offer an alternative technique for avoiding negative weights and allow you to specify the **Goodness of fit** and **Maximum passes** for the preferred **Goodness-of-fit technique**.
- A new **Component score coefficient matrix** option has been added to the **Report Properties** set of reporting options allowing for an additional level of **Factor Analysis** reporting.
- **Factor Analysis** now lets you create secondary factor groups for those cases where the highest factor score and the second highest factor score are similar.
- Provide your client with new colorful **Enhanced Text Reports** that can now be saved in XML, PDF and PowerPoint formats for **Sample Balancing** and **Factor Analysis**.
- Creating new variables in your data file for use in running **Frequencies**, **Simple Weighting**, **Sample Balancing** and **Factor Analysis** is a thing of the past now that you can use variables defined or declared in the **Glossary**.
- Save time and energy trying to remember that variable name for writing **Glossary** statements by using the new **View Data File Information** option without having to exit the **Setup Glossary Variables** dialog.
- Save your variable-type data files to other formats including ASCII, SPSS, Excel and Comma- and Tab-delimited, eliminating the need to go outside of WinCross.
- The next time your client asks for a median on a banner column, you can easily satisfy their request with the new **Median** banner column option and median rows will become median columns when creating banners from tables.
- You can now preview that new banner in an **Enhanced Text Report** format before running tables to make sure it is acceptable to you and your client.
- No need to be embarrassed by a misspelled word in your table titles, filter titles, subtitles, footnotes, etc. now that many dialogs in the WinCross interface alert you to possible misspellings.
- Provide another level of detail for your client with the new maximum of 1000 characters for table titles, subtitles and footnotes.
- New symbols for incrementing/including and excluding logic provide greater flexibility when using **VAR+/LOC+** banners and tables and row-level statistics and volumes.

- **Glossary** statements can now be entered without regard to case, eliminating unnecessary syntax errors.
- New status indicators for **Table**, **Frequency**, **Sample Balancing** and **Factor Analysis** reports eliminate the guesswork of whether reports are weighted and have **Glossary transformations** applied.
- Compatibility with the latest version of SPSS.

TAG Client Portal/TAG Drive

The **TAG Client Portal** is our new web-based portal providing a pathway for sharing data using a web browser or mobile device.

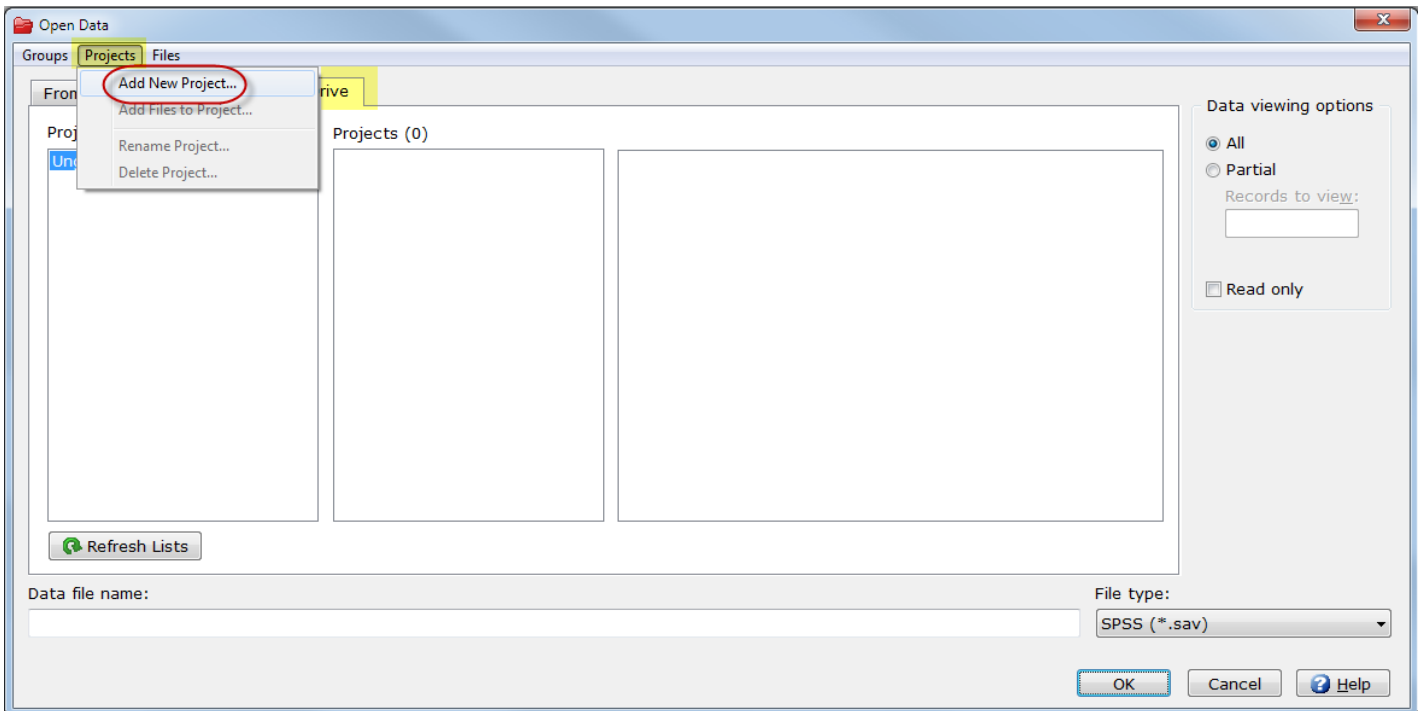
TAG Drive is a cloud-based file storage feature of the **TAG Client Portal**—available to new customers and customers in our annual maintenance program—that allows you to open and save job, data and report files in WinCross that are accessible from anywhere.



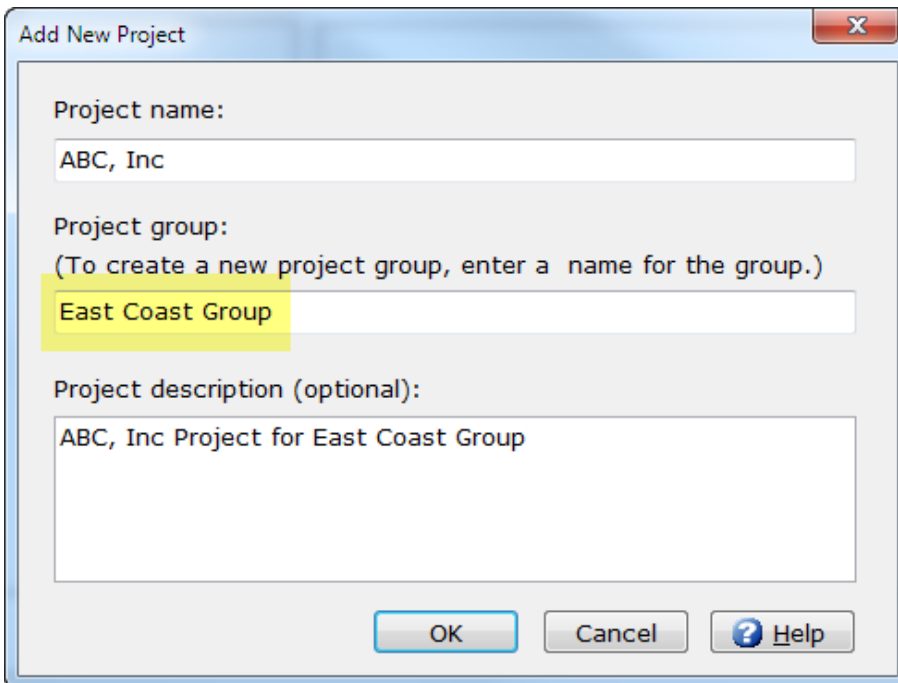
Having access from anywhere can be especially helpful if you are traveling or working from home and do not have access to your network drives from outside of the office.



When you click on the **TAG Drive** tab in WinCross for the very first time, the **Welcome to TAG Drive** dialog gives you the opportunity to **Sign Up for TAG Drive**.



You can add new groups and projects using the **Add New Project** option from the **Projects** menu on any **TAG Drive** tab within WinCross or from the Web using the **TAG Client Portal**.



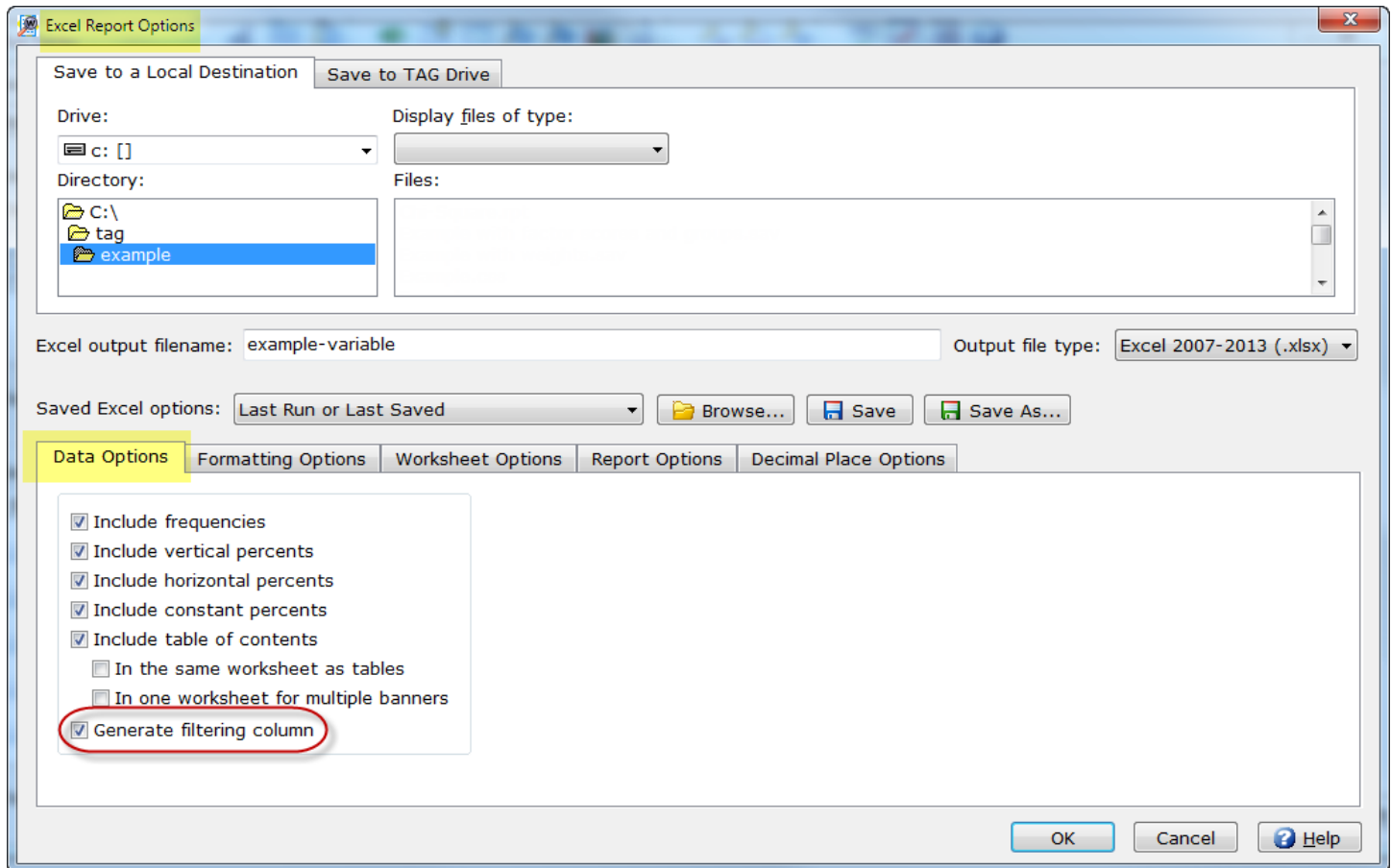
When you enter a **Project group** that does not already exist, a new group is added along with the **Project name** within the new group.

Once a project has been created, you can add files to that project using the **Add Files to Project** option from the **Projects** or **Files** menu on any **TAG Drive** tab within WinCross or you can upload files to your project from the Web using the **TAG Client Portal**.

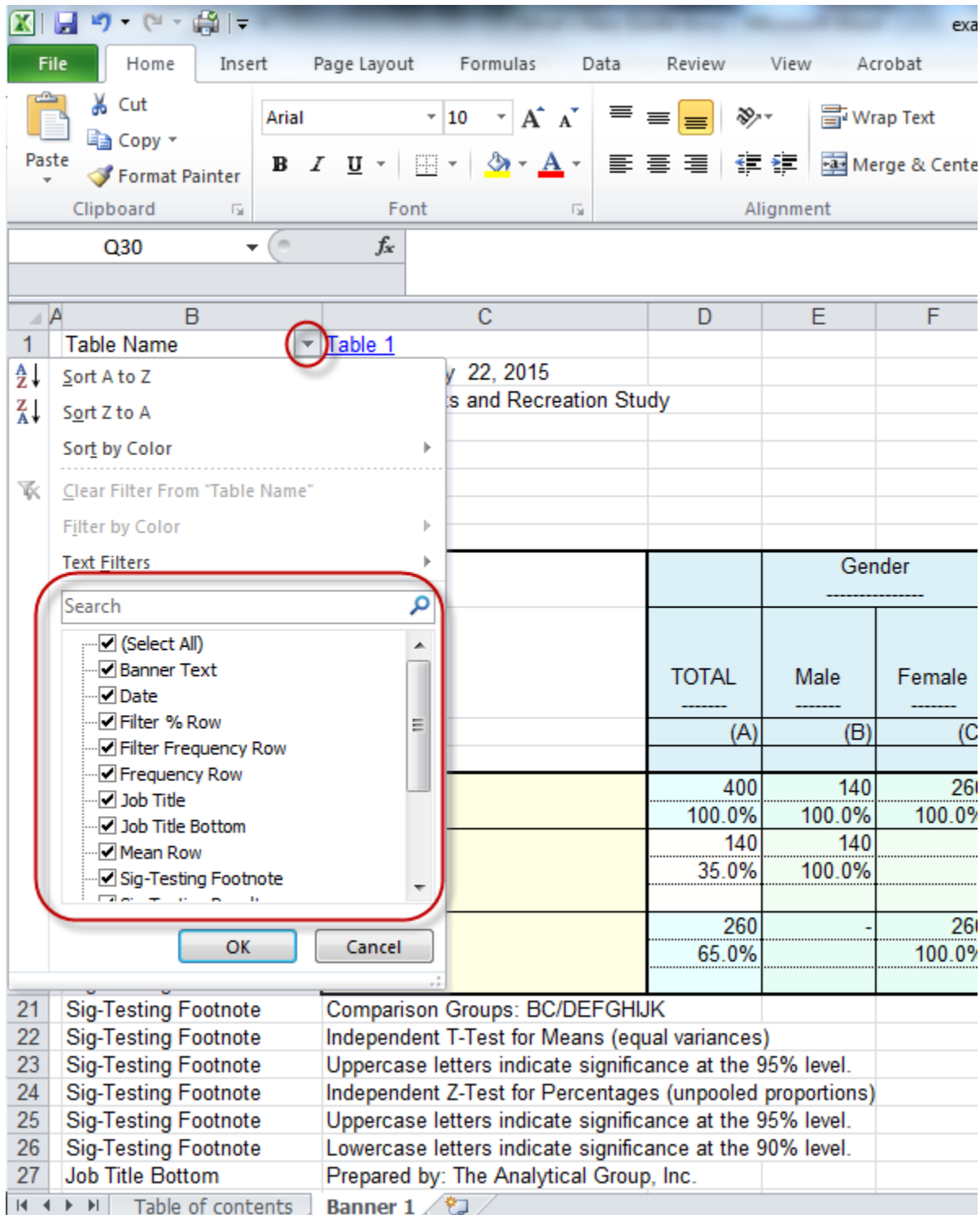
See the WinCross online **Help** topics "*Open Data*", "*Open Job*", "*Open Report*", "*Save Data As*", "*Save Job As*", "*Save Report As*", "*TAG Drive*" and "*Add New Project*" for more detailed information about opening files from and saving files to our new **TAG Drive**.

New Generate Filtering Column Option for Excel

Excel Options has a new **Generate filtering column** option that allows you to filter the rows for display on your Excel report. You can change what will display without having to rerun your tables.



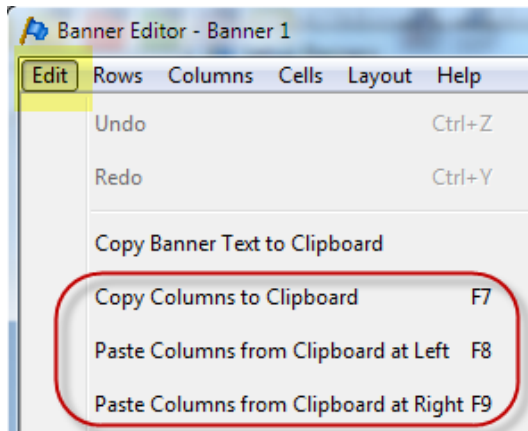
A hidden column is added to the Excel report that can be used to filter the rows for display.



See the WinCross online **Help** topic “Generate filtering column (Excel Options)” for more detailed information about this new feature.

Copy and Paste Banner Columns from Clipboard

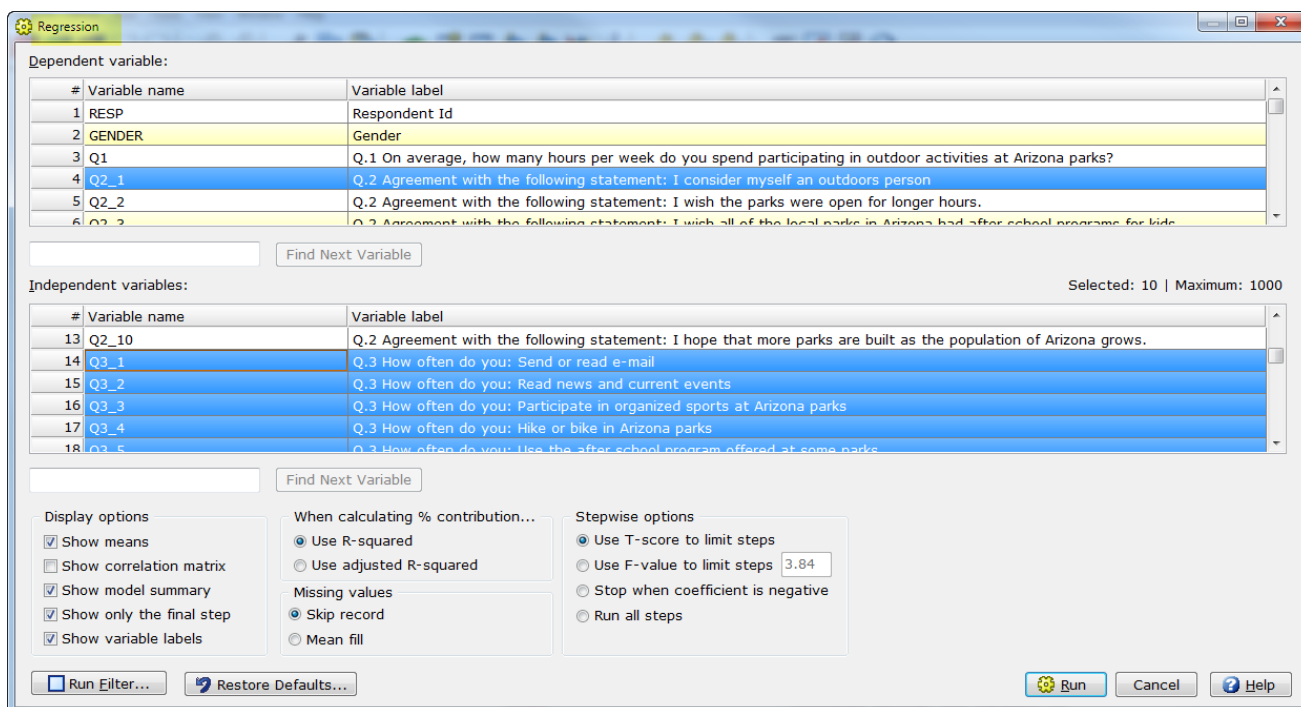
The **Edit** menu of **Setup|Banners|Edit Banner** has three new options for copying and pasting selected banner columns (including logic and options) into a new banner, another existing banner or to a new location in the same banner.



See the WinCross online **Help** topic "*Edit Menu (Edit Banner)*" for more detailed information about these new **Edit** menu options.

Regression Module

WinCross has added a **Regression** module as an answer to your multiple regression analysis needs.



You can access the **Regression** module by selecting either **Run|Regression** or **Tools|Regression**.

WinCross' **Regression** starts by selecting the independent variable that is most correlated with y as its initial independent dependent variable. It then uses the adjusted- R^2 as its metric and, at each step of the process, selects the independent variable that, when added to those already selected, produces the largest adjusted- R^2 . It halts when an independent variable is selected whose coefficient is not significantly different from 0 using the appropriate t statistic.

See the WinCross online **Help** topics "*About Regression*", "*Regression: ASCII data*", or "*Regression: Variable data*" or **Help|Statistical Reference** for more detailed information about the new **Regression** module.

Significance Testing Added to ExpressTabs

ExpressTabs now performs significance testing on your express-table results and allows you to create your own comparison groups.

ExpressTabs Statistics View

Table options

- Create one table for each row variable
- Append row variables into a single table
- Scan row variables into a single table
- Summary of row variables for selected values

Run options

Cases to run: 400

Run Filter... Weight...

Variables for banner columns: 55 Selected: 2

Find a variable: Find Next

#	Variable Name	Variable Label
47	Q6A_6	Q.6A Of the last 10 visits to Arizona parks, how many visits were to: Squaw Peak Park
48	Q6A_7	Q.6A Of the last 10 visits to Arizona parks, how many visits were to: Grand Canyon National Park
49	Q7	Q.7 Would you say you are visiting Arizona parks more, less, or the same as you were a year ago?
50	Q8	Q.8 How likely are you to visit an Arizona park in the future?
51	Q9	Q.9 What is your current marital status?
52	Q10	Q.10 Do you have any children under the age of 18 living with you?
53	EDUCATION	Q.11 Which of the following best represents the highest level of education you have completed?
54	INCOME	Q.12 Which of the following best describes your annual household income?
55	WEIGHT	WEIGHT

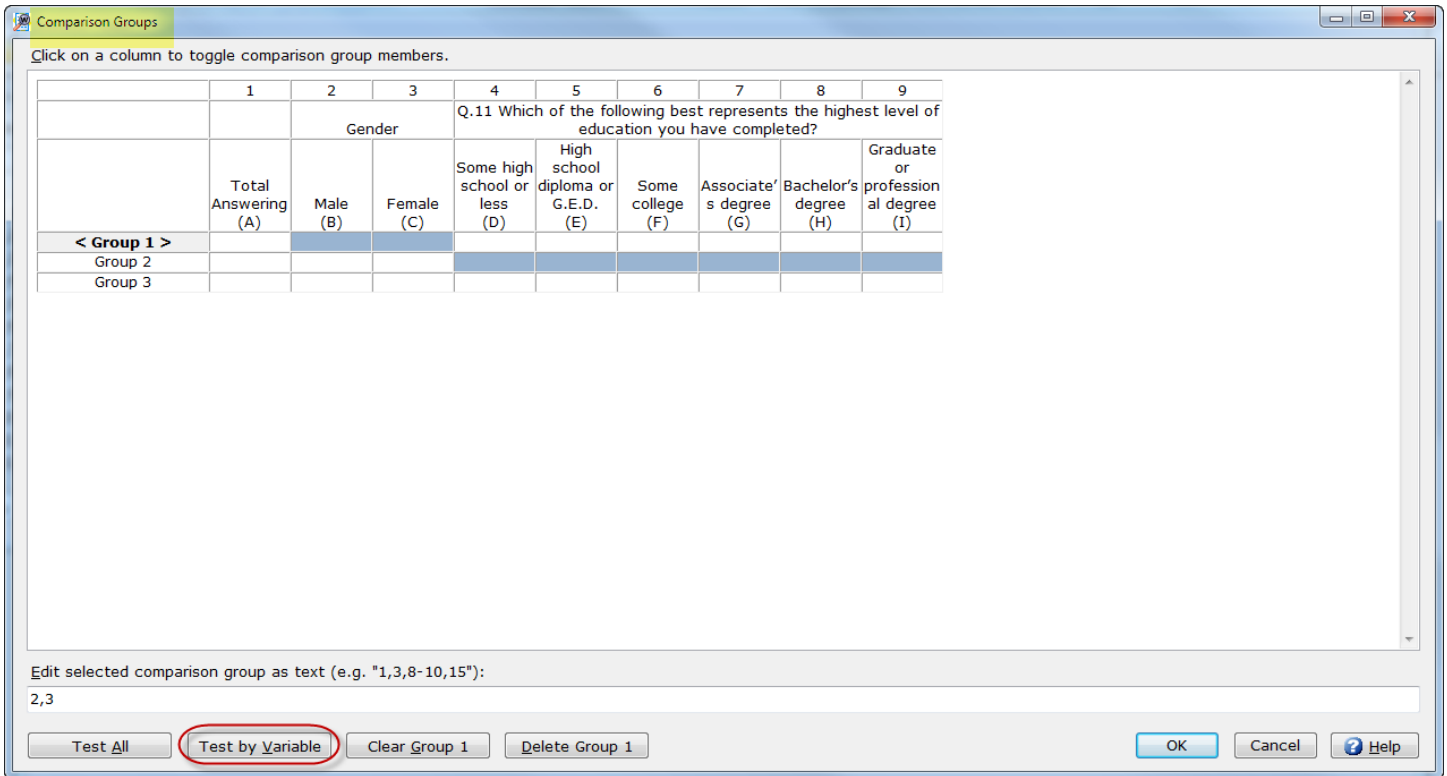
Variables for rows: 55 Selected: 1

Find a variable: Find Next

		Gender			Q.11 Which of the following best of education you have completed?		
		Total Answering (A)	Male (B)	Female (C)	Some high school or less (D)	High school diploma or G.E.D. (E)	Some college (F)
Q.10 Do you have any children under the age of 18 living with you?	Total Answering	400	140	260	8	78	148
	Yes (1)	184	50	134	3	35	74
	No (2)	216	90	126	5	43	74

Perform significance testing
 Cell width

ExpressTabs performs significance testing for percents when **Statistics>Show Vertical Percent** is selected and performs significance testing for means when **Statistics>Show Mean** is selected. The **Dependent Paired/Overlap (Multi)** test is always used, however, if the data are independent the results would be the same as if the **Independent (using unpooled proportions) Z-Test** was used for percents and the **Independent (assume unequal variances) T-Test** was used for means.



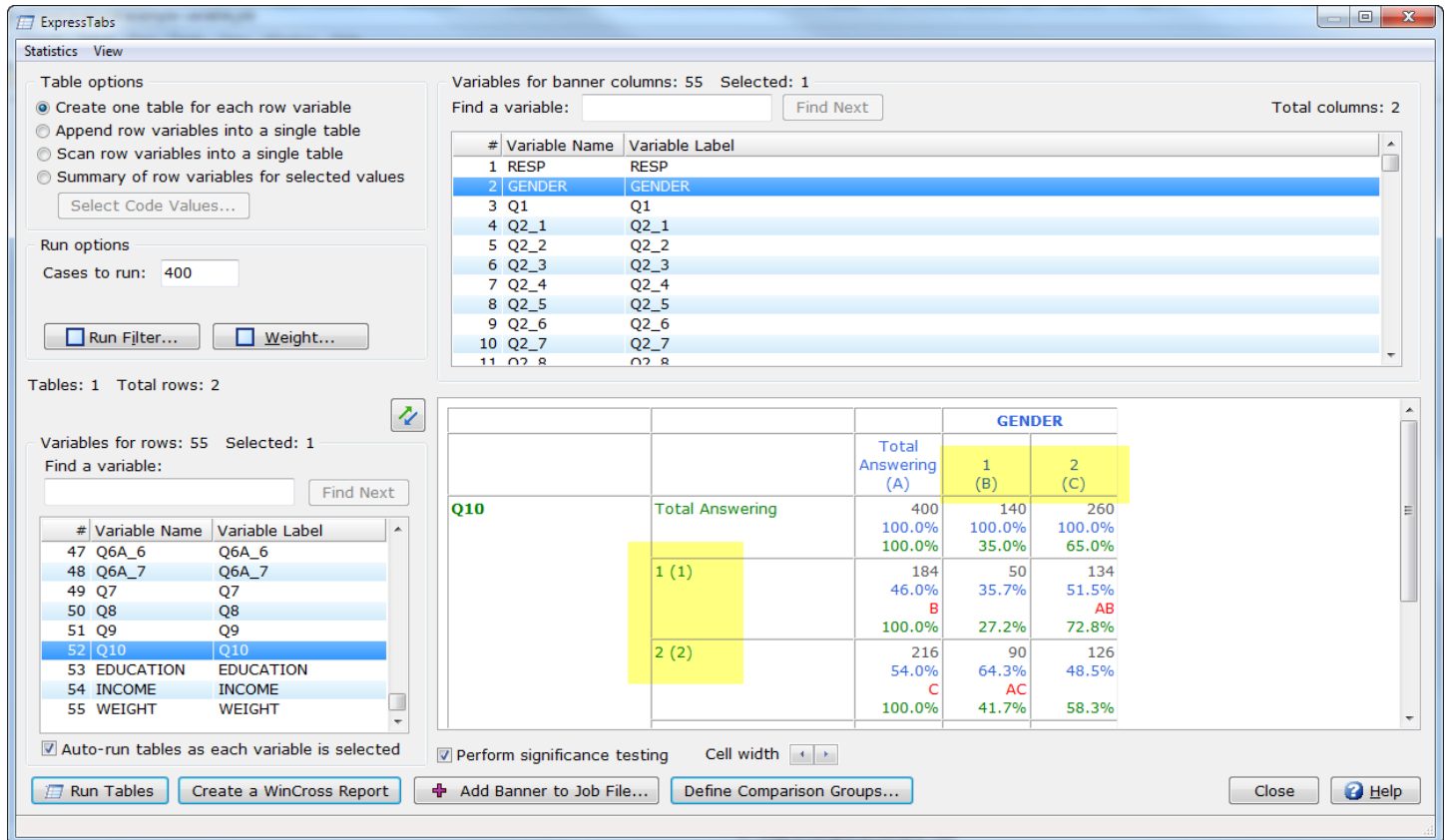
By default, significance testing is done for all banner columns. You can use **Define Comparison Groups** to create alternative comparison groups to the WinCross default.

See the WinCross online **Help** topics “*Run|ExpressTabs*” or “*Comparison Groups (ExpressTabs)*” for more detailed information about these new **ExpressTabs** options.

ExpressTabs, Express Tables from Variable Data and Banner Templates from Variable Data

Processing **ExpressTabs** and adding tables and banners from your data file has been expanded to other variable-type data files. **Express Tables from SPSS Data** and **Banner Templates from SPSS Data** from the **Setup** menu have been renamed to **Express Tables from Variable Data** and **Banner Templates from Variable Data**.

Variable data types include SPSS (*.sav), Comma-delimited (*.csv), Tab-delimited (*.tab or *.tsv) and Excel (*.xls, *.xlsx, or *.xism).

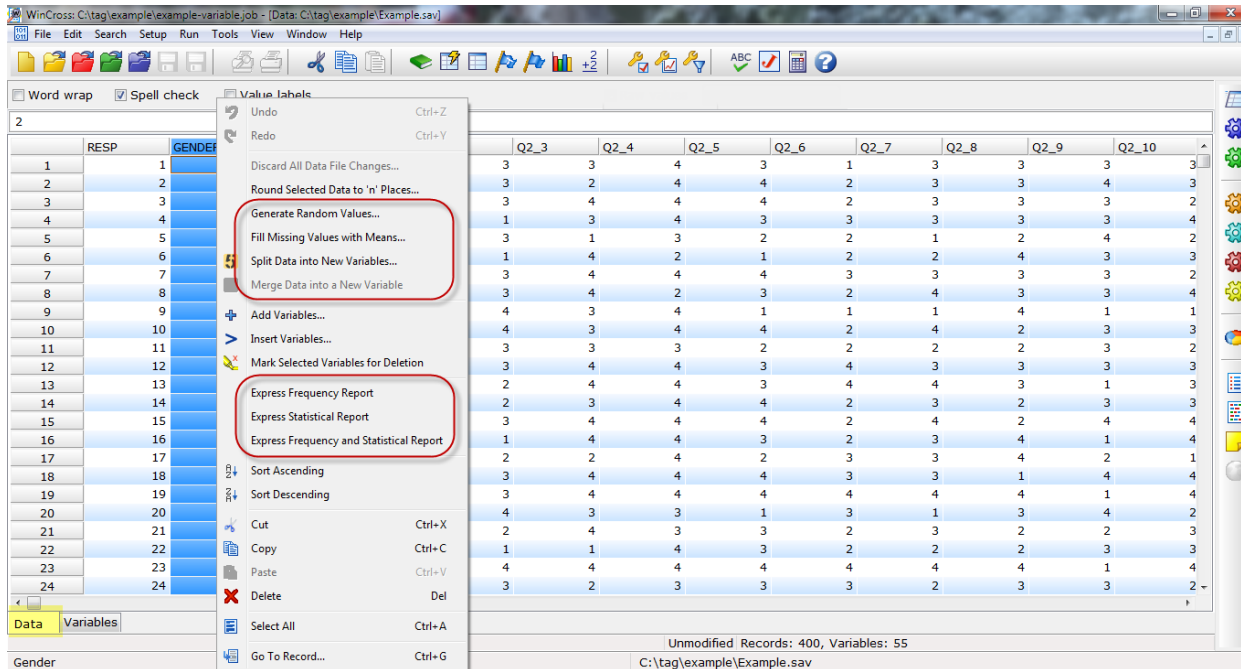


Non-labeled variable data will use the code values in the data as value labels.

See the WinCross online **Help** topics "Run|ExpressTabs", "Express Tables from Variable Data" or "Banner Templates from Variable Data" for more detailed information about using these features.

Right-click Context Menu Data Tab Options

The right-click context menu of the **Data** tab has new options for creating an **Express Frequency Report**, **Express Statistical Report** or both **Express Frequency and Statistical Reports**. You can also **Generate Random Values**, **Fill Missing Values with Means**, **Split Data into New Variables** or **Merge Data into a New Variable**.

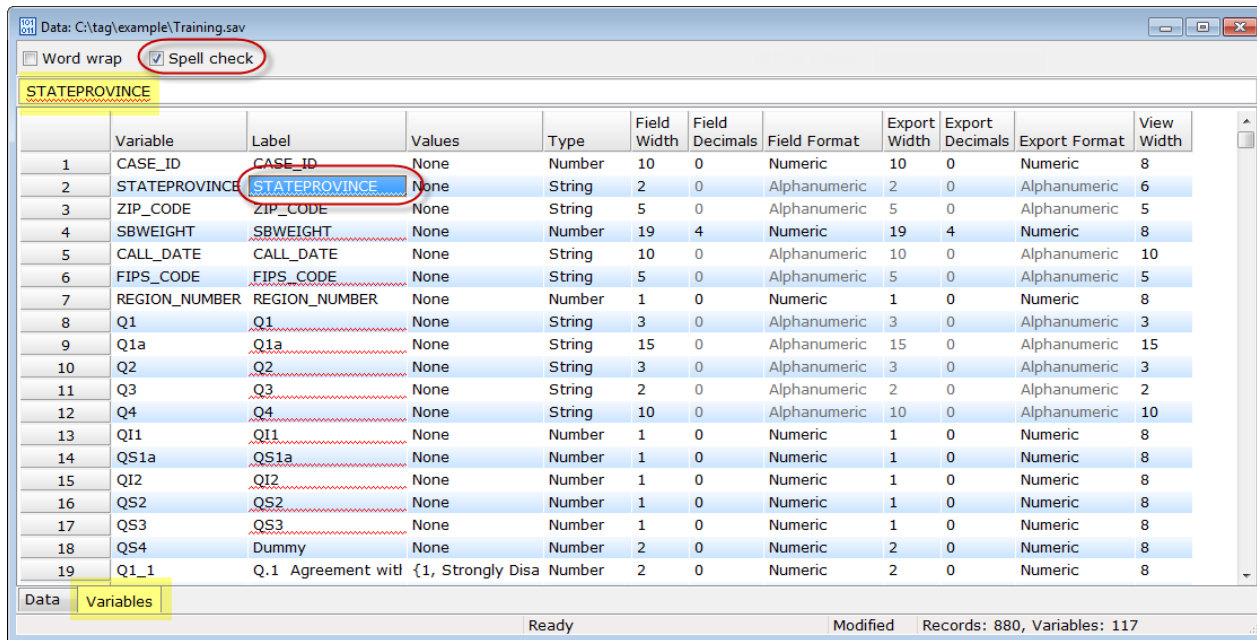


These time-saving options allow data changes without leaving the WinCross interface.

See the WinCross online **Help** topics “*Generate Random Values*”, “*Fill Missing Values with Means*”, “*Split Data into New Variables*”, “*Merge Data into a New Variable*” or “*Create an “Express” frequency and/or statistical report for selected variables*” for more detailed information about these new options.

Spell-checking for the Data Grid

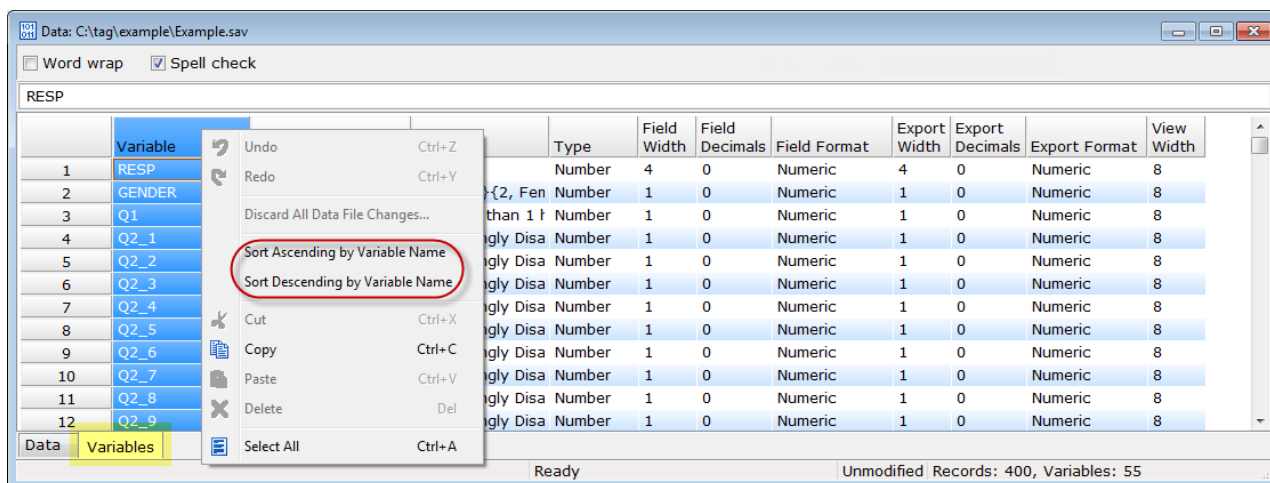
The **Data** and **Variables** tabs of the data grid have a new **Spell check** option. When enabled, this new **Spell check** option will remain set for each WinCross session.



See the WinCross online **Help** topic “*Editing variable data*” for more detailed information about this new data grid option.

Reorder Variables

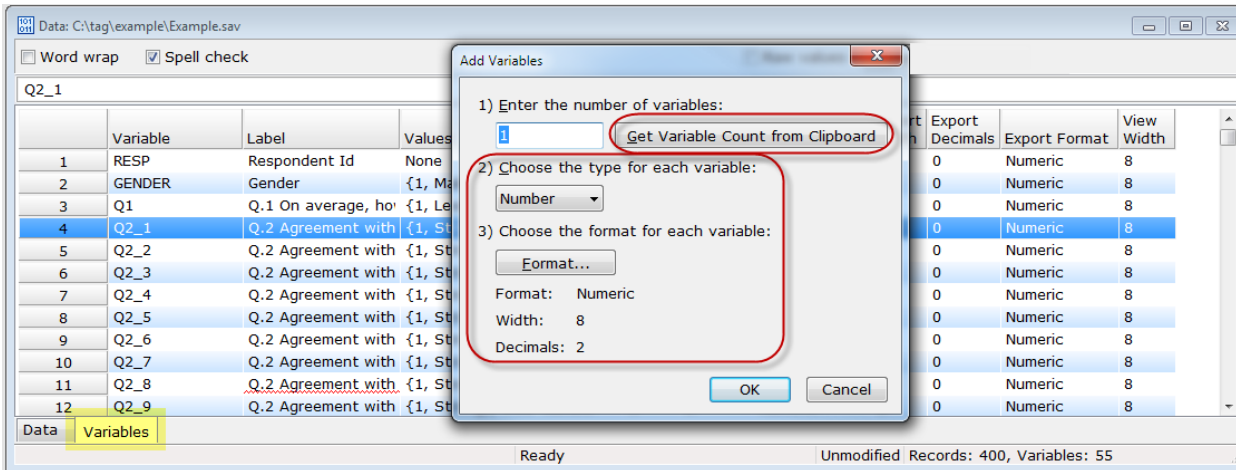
The order of variables can easily be changed using the new **Sort Ascending by Variable Name** and **Sort Descending by Variable Name** options from the right-click context menu on the **Variables** tab of the data grid.



See the WinCross online **Help** topic “*Sort variables by variable name (Data grid)*” for more detailed information about these new right-click options.

Specify Variable Type and Format for New Variables

The right-click context menu option of **Add Variables** has been enhanced to let you specify the format **Type (Number or String)** and the **Format** including the type of **Format, Width** and **Decimals** for variables of **Number** type and **Width** only for variables of **String** type.

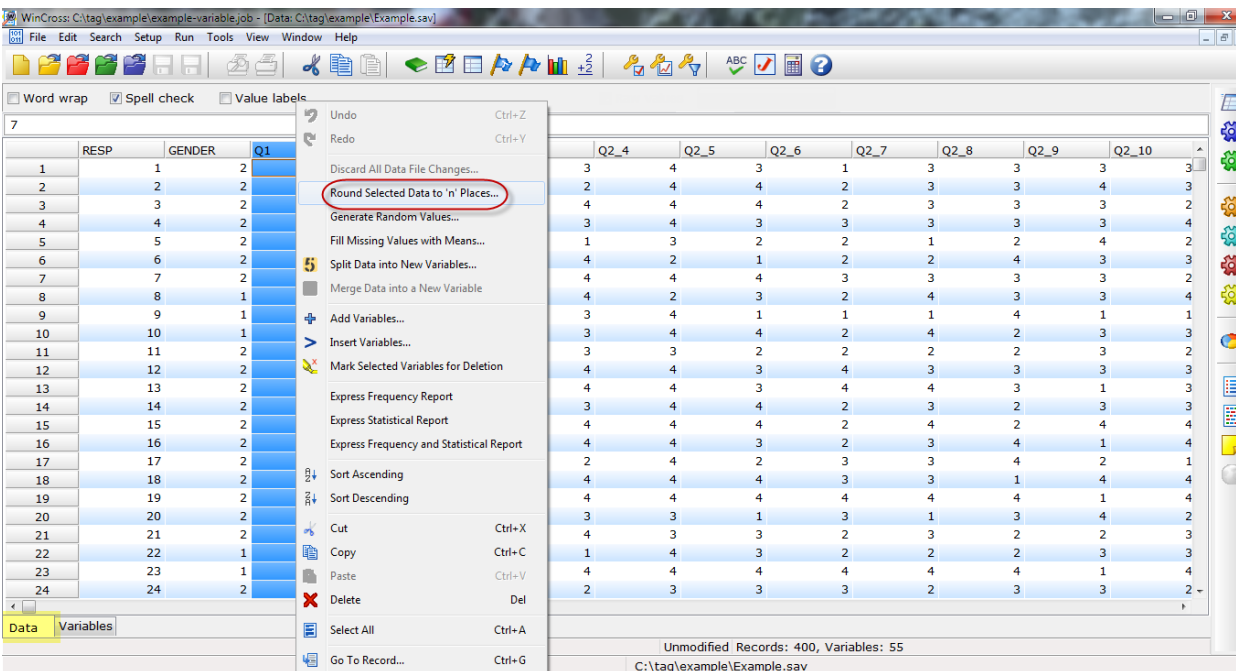


Get Variable Count from Clipboard will add the number of variables based on the number of columns currently on the Windows Clipboard.

See the WinCross online **Help** topic “*Add, insert and delete variables (Data grid)*” for more detailed information about these additional options for adding new variables.

Round Selected Data to ‘n’ Places

You can easily change data decimal precision using the new right-click **Round Selected Data to ‘n’ Places** option on the **Data** tab of the data grid.



- Highlight the selection of variable(s) or data values.
- Right-click anywhere on the **Data** tab.
- Choose **Round Selection to ‘n’ Places** from the right-click context menu.
- **Enter the number of decimal places (0-16)** for rounding.

See the WinCross online **Help** topic “*Round Selection to ‘n’ Places*” for more detailed information about this new option.

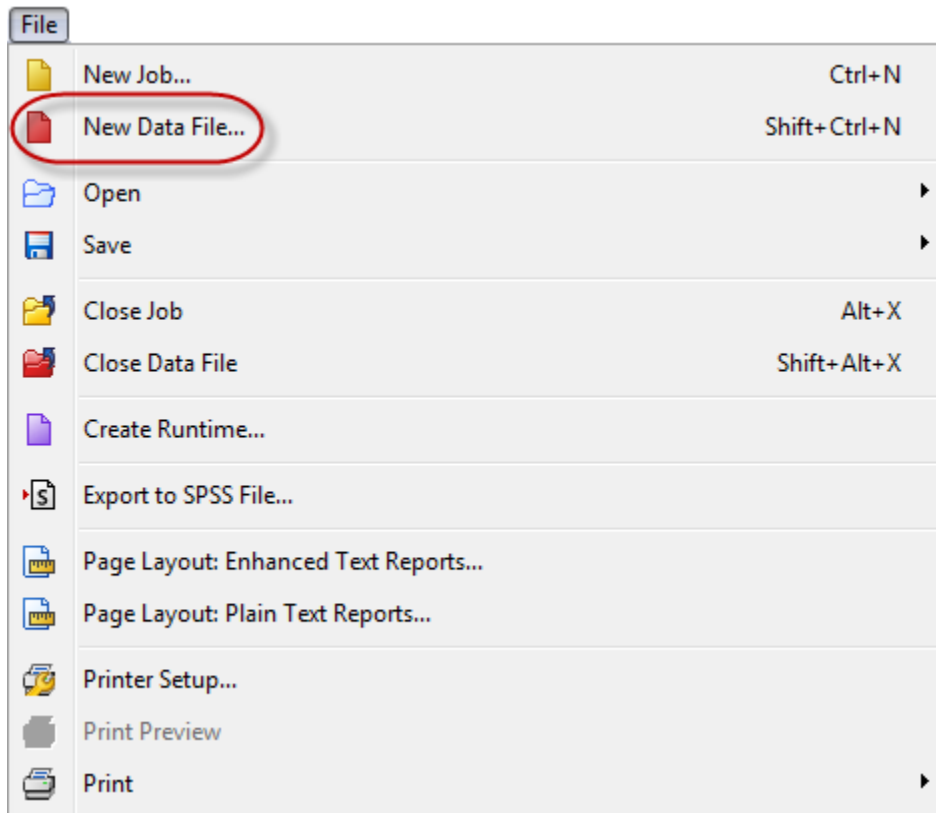
Saving Data File from Glossary, Simple Weighting, Sample Balancing and Factor Analysis

Data files saved from **Setup|Glossary Variables|Save Data As, Run|Simple Weighting, Run|Sample Balancing** and **Run|Factor Analysis** will now retain the width for all variables. Previously, variables greater than 12 characters in width were written out with only the first 12 characters of the data.

See the WinCross online **Help** topics “*Glossary Variables*”, “*Simple Weighting: Variable data*”, “*Sample Balancing: Variable data*” and “*Factor Analysis: Variable data*” for more detailed information about saving data.

Create a New Data File

The **File** menu of WinCross 16 has a **New Data File** option that allows you to create a new variable data file.



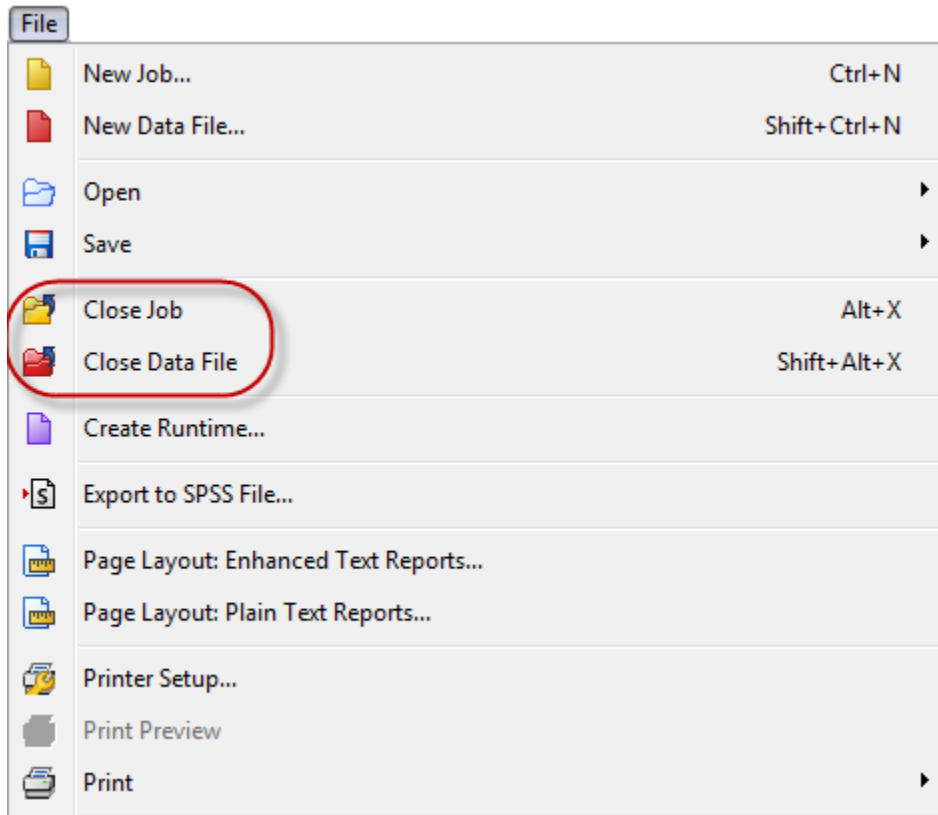
You are prompted to enter:

- The number of variables. Selecting **Get Variable Count from Clipboard**, will add the number of variables to the new data file based on the number of columns currently on the Windows Clipboard.
- The type for each variable. Choose either **Number** or **String**.
- For type **String**, the width of each variable.
- For type **Number**, the **Format, Width** and **Decimal places**.
- The number of records. Selecting **Get Record Count from Clipboard**, will add the number of records to the new data file based on the number of rows (records) currently on the Windows Clipboard.

See the WinCross online **Help** topic “*New Data File*” for more detailed information about this new **File** menu option.

Close Job and Data Files

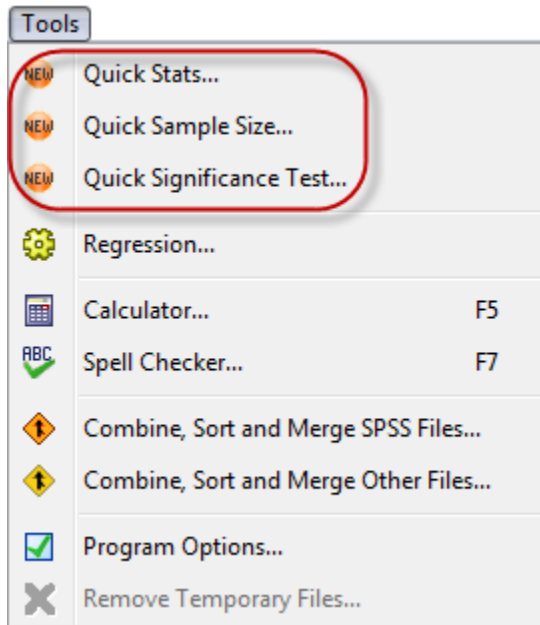
The **File** menu has new **Close Job** and **Close Data File** options that let you close files without having to open or create a new file.



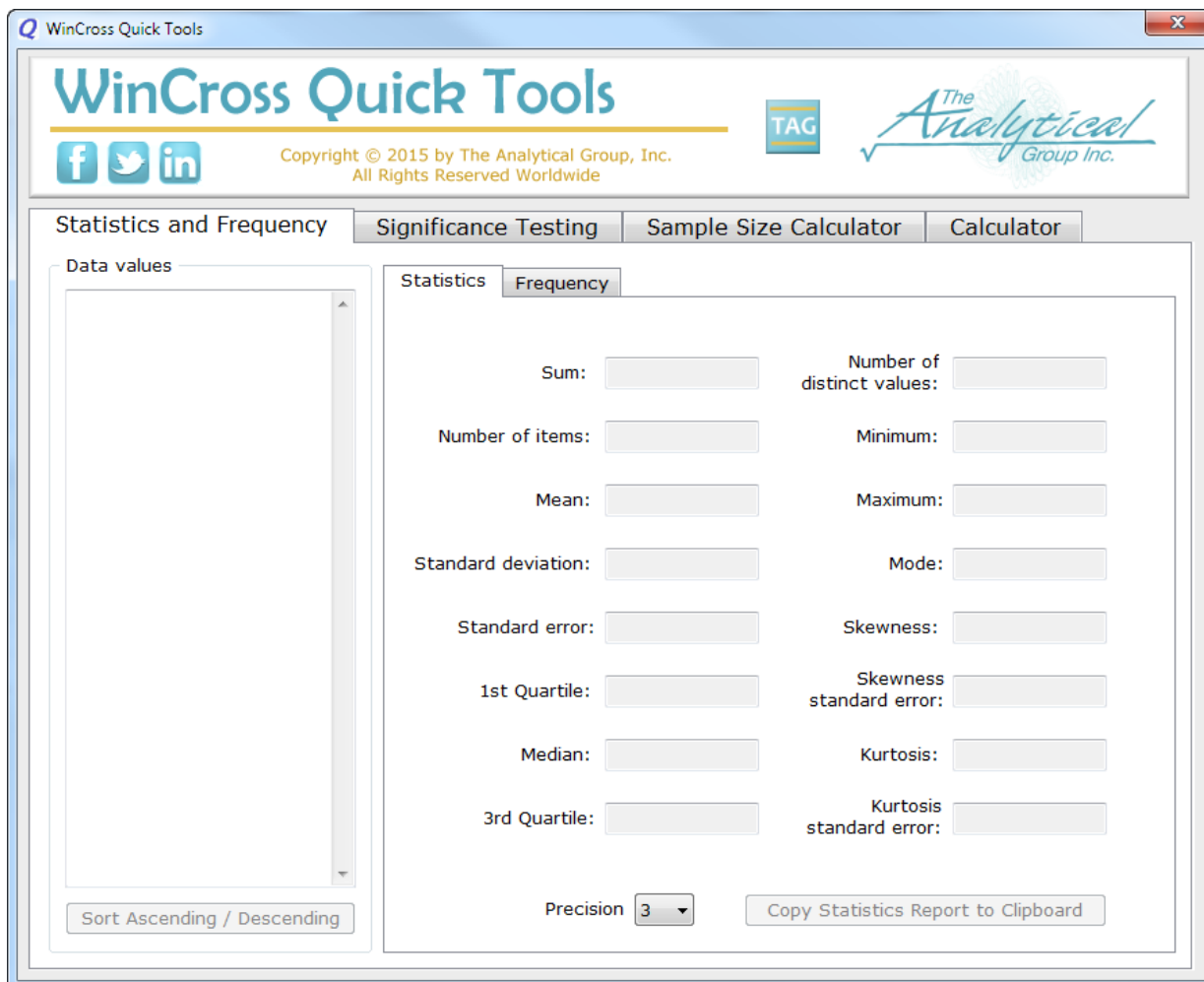
See the WinCross online **Help** topics "*Close Job*" and "*Close Data File*" for more detailed information about these new **File** menu options.

Quick Tools

The **Tools** menu of WinCross 16 offers a group of convenient tools ranging from a simple calculator to significance testing for percentages and means.



Selecting any of the 3 options opens the **WinCross Quick Tools** dialog to the appropriate tab for that option.



The **Statistics and Frequency** tab lets you enter or copy/paste data values for determining statistics such as **Sum, Mean, Standard deviation** etc. or a simple frequency of the values entered or pasted. The data values can be sorted in ascending or descending order.

The **Significance Testing** tab offers significance testing for **Two Independent Samples, Two Categories in One Sample, Proportion vs. Theoretical** and **Two Matched Samples for Percentages and Averages (Means)**. Simply enter the appropriate values to get the **z score, Significance level** and **Confidence level** for the selected test.

The **Sample Size Calculator** tab provides the **Sample Size Needed for a Given Confidence Interval** or the **Confidence Interval Resulting from a Given Sample Size**. Just enter the appropriate values to determine either the **Sample size needed** or the **Confidence interval**.

The **Calculator** tab provides the convenience of quick calculations that might be helpful when using the other **WinCross Quick Tools** tabs without having to leave the **Quick Tools** menu.

See the WinCross online **Help** topic "*Quick Tools*" for more detailed information about these new tools.

Increased Memory Capacity

WinCross 16 offers increased memory capacity for 64-bit operating systems that will provide greater WinCross processing capabilities and reduce "Out of memory" conditions.

New Maximums for Record Length and Number of Variables

The maximum for record length of variable-type data has been increased and is now limited by available memory only. The maximum number of variables has been increased for most variable-type data files with the exception of Microsoft Excel 1997-2003 (*.xls) files. SPSS and comma- or tab-delimited data files can now have up to 1,048,000 variables depending on the record length as long as the combination does not exceed memory limits. Microsoft Excel 2007-2013 (*.xlsx) data files can now have a maximum of 16,384 variables.

See the WinCross online **Help** topic "*Maximums*" for more detailed information about WinCross maximums/defaults.

New Square Root Function of the CALC Statement

The **CALC** statement has added a new square root function (**SQRT**) providing more row and column logic options.

Example: CALC SQRT {V3 - V2}

In banner logic:

If the above example is the logic for banner column 4, the result in banner column 4 would be the square root of the vertical percent of banner column 3 minus the vertical percent of banner column 2.

In row logic:

If the above example is the logic for table row 4, the result in table row 4 would be the square root of the vertical percent of table row 3 minus the vertical percent of table row 2.

See the WinCross online **Help** topic "*CALC Feature*" for more detailed information about this new function.

New SUB/ENDSUB Feature

A new option has been added for the **SUB** feature. You can now use **ENDSUB** to delimit the group of rows that you are adding using **SUB** logic.

Example:

```
SUB
Row 1
Row 2
Row 3
ENDSUB
```

The benefit of using **SUB/ENDSUB** logic is that you can add or remove rows from within the logic without needing to change the **SUB** logic row.

See the WinCross online **Help** topic "*SUB Feature*" for more detailed information about the new **ENDSUB** option.

DECLARE New Variables in the Glossary

You can now create new variables in the **Glossary** using the **DECLARE** instruction without the need to specify a record/column location or use the **ADDLEN**, **ASSIGN** or **COMPUTE** instructions.

The new variables can be referenced in your job file or saved to your data file using the **Save Data As** option of **Setup|Glossary Variables**.

Syntax:

```
DECLARE new variable
DECLARE new variable,new variable,new variable
DECLARE new variable = variable
DECLARE new variable = value
DECLARE new variable = variable (or record/column) operator variable (or record/column)
DECLARE new variable = variable (or record/column) operator value
```

DECLARE new variable:*n* (where *n* specifies the width of the new variable; with a maximum width of 12) can be specified for all of the above syntax options.

If no width is specified, the default width is 12.

Example 1:

```
DECLARE NEW_VAR1
```

Example 2:

```
DECLARE NEW_VAR1,NEW_VAR2,NEW_VAR3,NEW_VAR4
```

Example 3:

```
DECLARE NEW_VAR1 = Q2A
```

Example 4:

```
DECLARE MAX_RECS = 10000
```

Example 5:

```
DECLARE Q2_TOT = Q2A + Q2B
```

Example 6:

```
DECLARE INCOME:10 = INCOME_1 * 10
```

See the WinCross online **Help** topics "*DECLARE*" or "*DECLARE Examples*" for more detailed information about this new instruction and more examples of how to use it.

Implicit ASSIGN Instruction

Setup|Glossary Variables now supports the implicit **ASSIGN** instruction. The **ASSIGN** keyword is only required if it is preceded by **IF** logic.

The **ASSIGN** keyword is now optional for the following syntaxes:

Example 1:

ASSIGN GENDER = (1)

or

GENDER = (1)

Both statements mean to assign the value of 1 into the variable GENDER.

Example 2:

ASSIGN Q1 = Q8

or

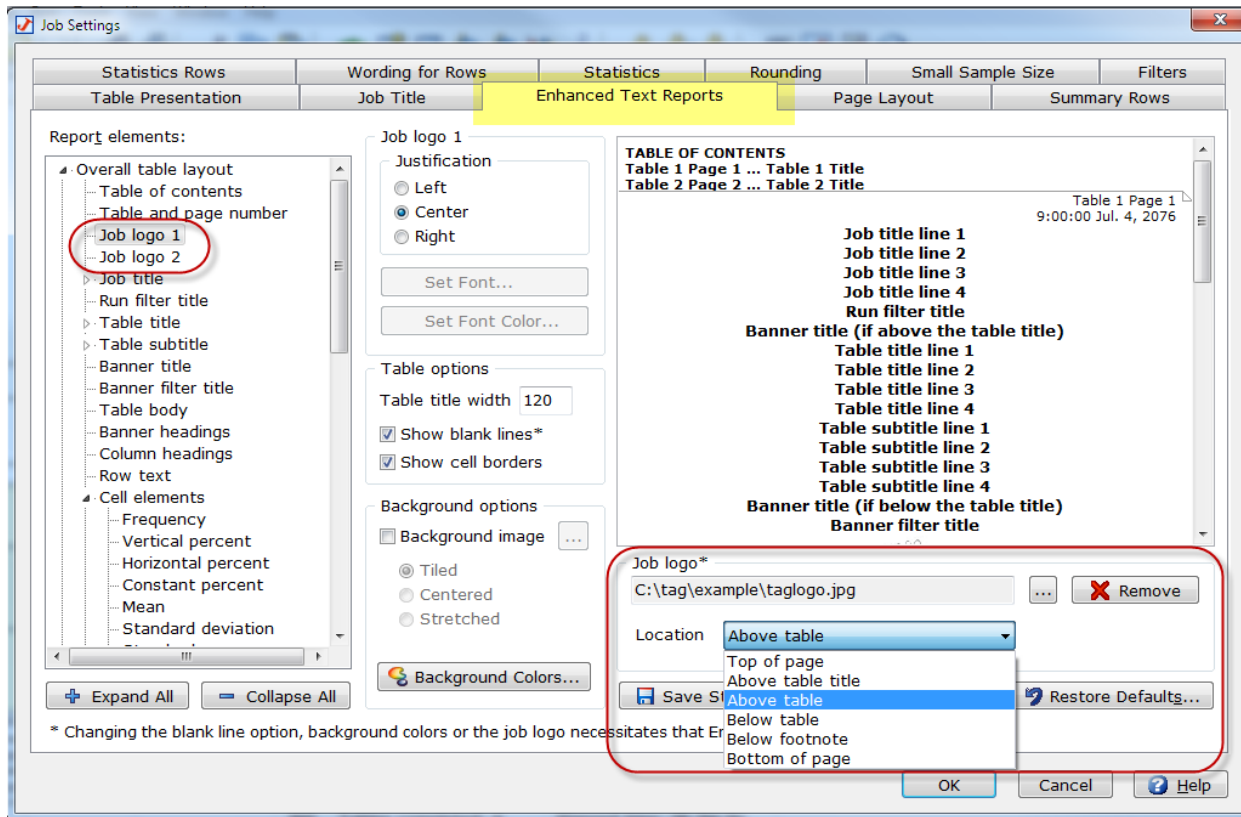
Q1 = Q8

Both statements mean to assign the contents of variable Q8 into variable Q1.

See the WinCross online **Help** topics “*ASSIGN*” or “*ASSIGN Examples*” for more detailed information about this new implicit instruction.

Multiple Job Logos and Logo Placement Options

Your **Enhanced Text Reports** can now be more personalized than ever with the addition of a 2nd job logo and additional job logo placements options.

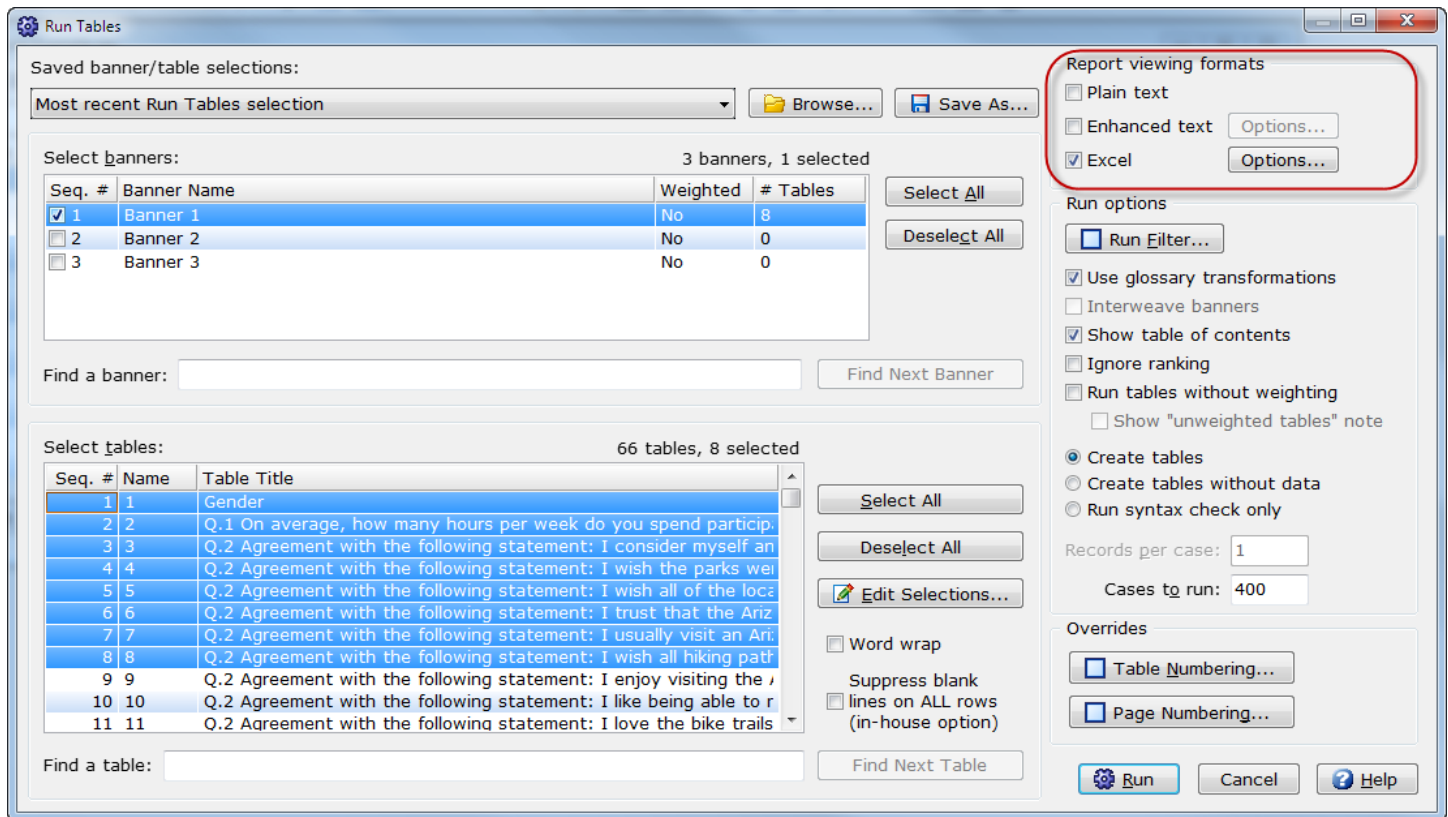


The **Enhanced Text Report** tab of **Setup|Job Settings/Profile Settings** now offers 2 job logos and each job logo has additional placement options.

See the WinCross online **Help** topics “*Job Settings|Enhanced Text Reports*” or “*Profile Settings|Enhanced Text Reports*” for more detailed information about the new job logos and placement options.

Report Viewing Format Changes

The **Report viewing formats** options of **Run|Tables** now allows you to create **Excel** reports without creating **Plain text** or **Enhanced text** reports too.

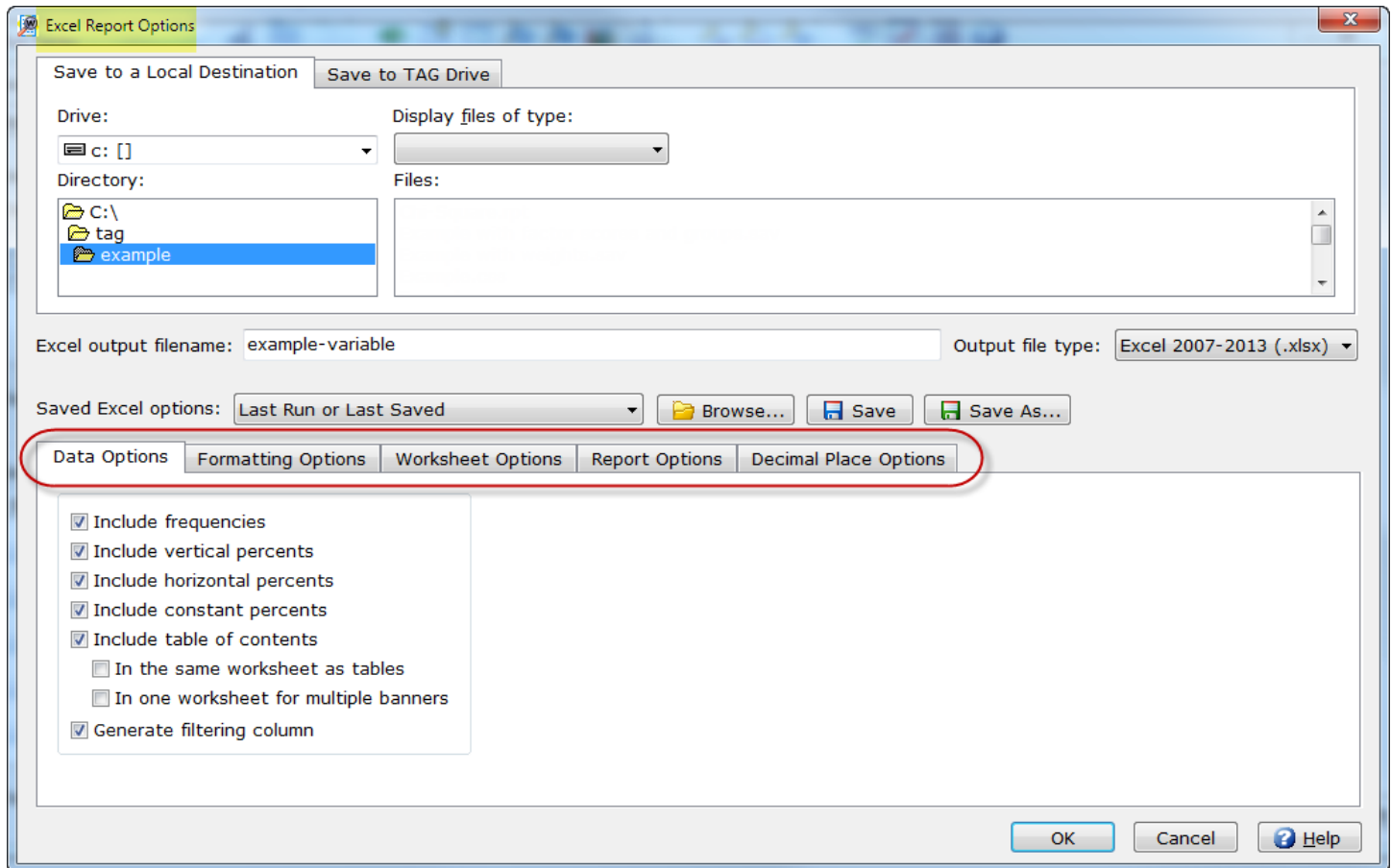


You can select **Excel** by itself or with any combination of **Plain text** and/or **Enhanced text**. When **Excel** is selected as one of the **Report viewing formats**, Excel is now automatically launched and opens the Excel file specified on the **Excel Options** dialog. If more than one workbook is being created, the first workbook created will be opened.

See the WinCross online **Help** topics "**Run|Tables**" and "**Excel Options**" for more detailed information about the changes to **Report viewing formats**.

Excel Options Organized in Tab View

Excel Report Options are now presented in a more organized tab view. Each tab contains a set of options organized by type.

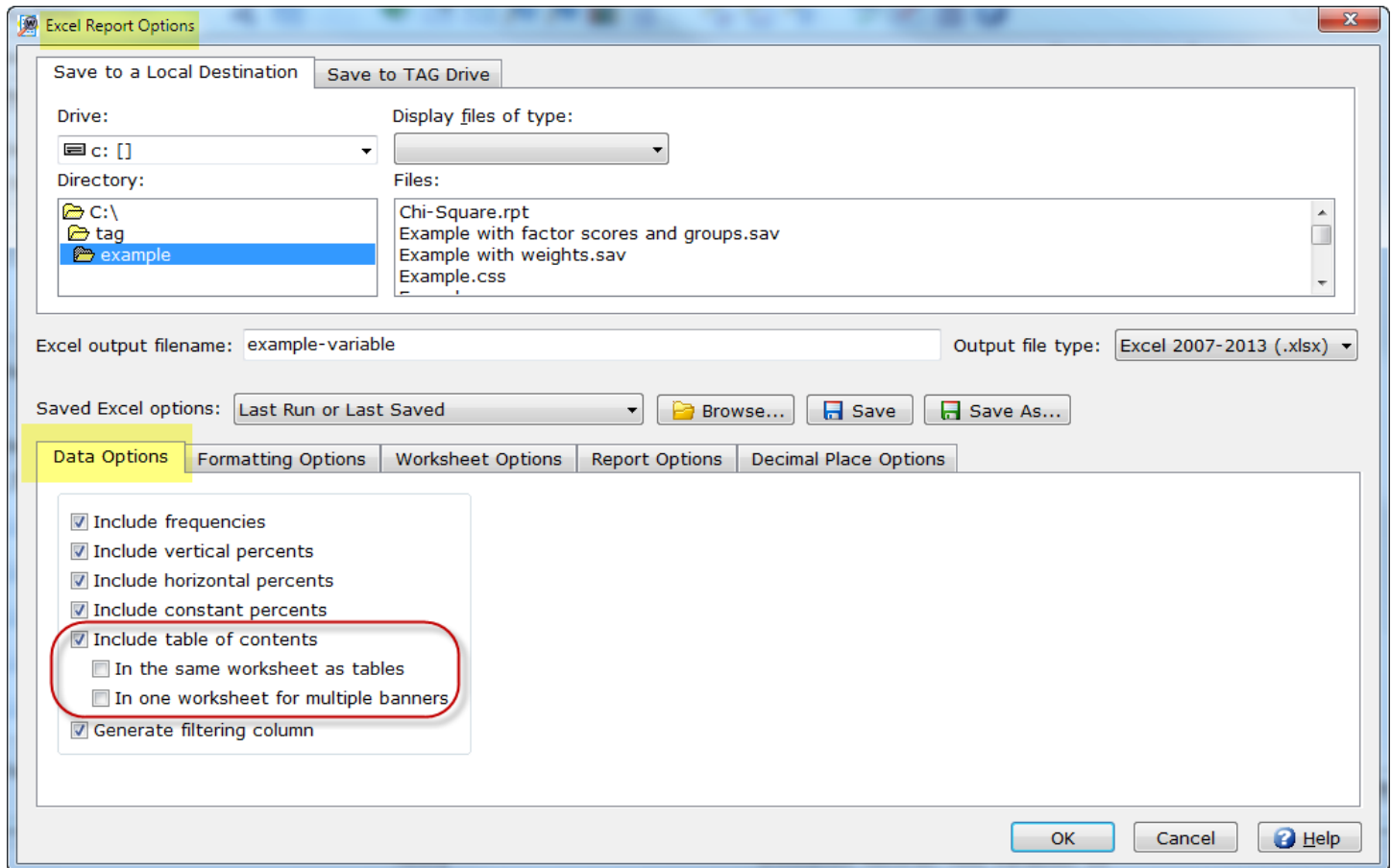


You can choose between **Data Options**, **Formatting Options**, **Worksheet Options**, **Report Options** and **Decimal Place Options**.

See the WinCross online **Help** topic "*Excel Options*" for more information about each tab of **Excel Report Options**.

New Table of Contents Options for Excel

Run|Tables|Excel Options now has added flexibility for the **Include table of contents** option and including the table of contents becomes the new WinCross default.



You can now include the table of contents in the same worksheet as the tables for the **Worksheet options** of **Create all tables in one worksheet**, **one banner per workbook** or **Create one banner per worksheet, all in one workbook** by using the new **In the same worksheet as tables** option.

You can now write the table of contents to one worksheet in the same workbook when choosing the **Create one banner per worksheet, all in one workbook** or the **Create each table as a separate worksheet, all in one workbook** option by using the new **In one worksheet for multiple banners** option. This option is only useful if you are processing more than one banner and want the table of contents for each banner in one worksheet instead of three separate worksheets.

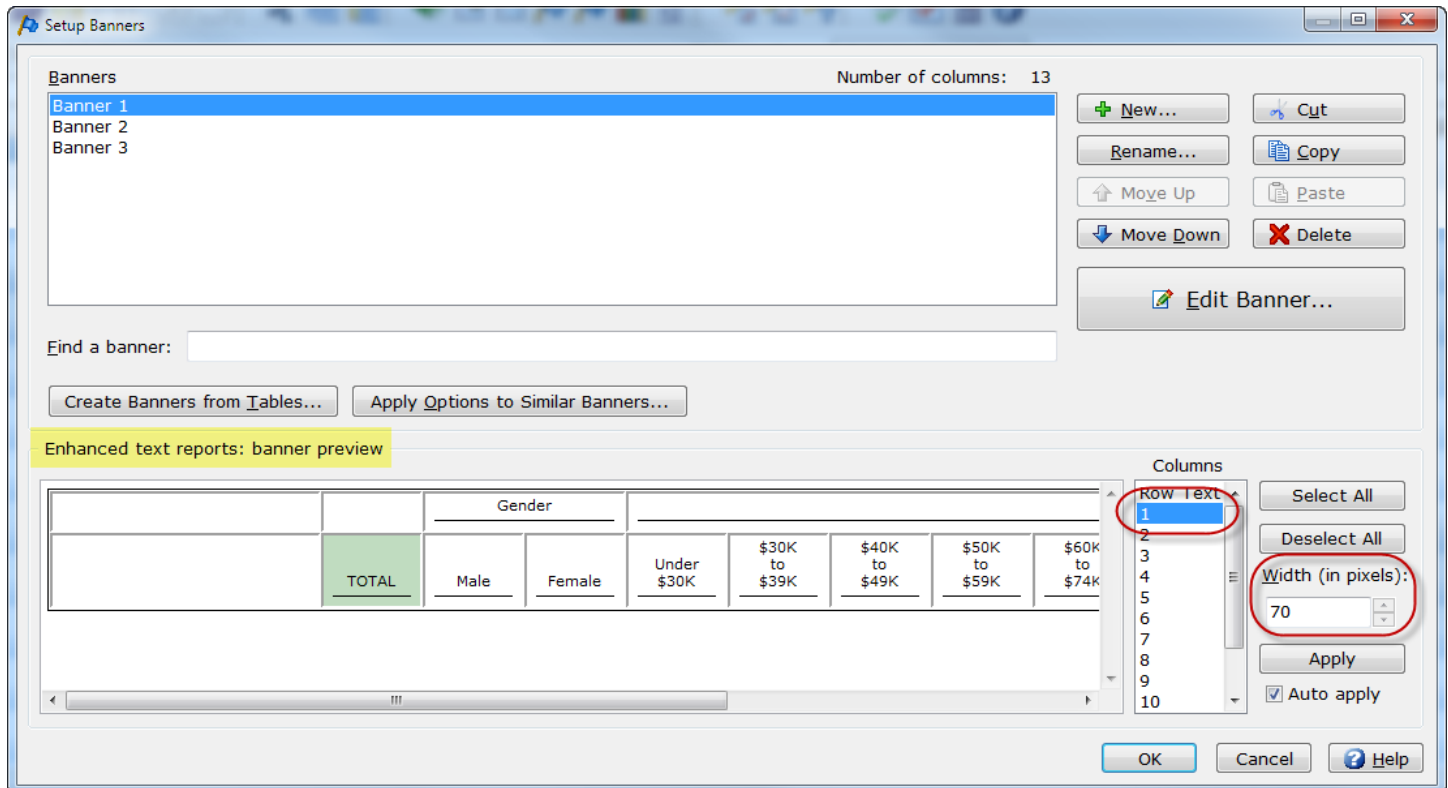
Worksheet names will now reflect the table name when using the **Create each table as a separate worksheet, one banner per workbook** or **Create each table as a separate worksheet, all in one workbook** option even when you are not showing the table name on the Excel report. Previously the **Show table name at top of page** option on the **Table Presentation** tab of **Job Settings** had to be selected for worksheet names to reflect the table name.

The **Include table of contents** option is now enabled as the WinCross default and has been relocated to the **Data Options** tab. If you do not want a table of contents created, this option will need to be disabled.

See the WinCross online **Help** topic "*Excel Options*" for more detailed information about these new options for Excel reports.

Banner Column Width for Excel Reports

The banner column width specified for **Enhanced Text Reports** on the **Setup|Banners** dialog is now respected when creating Excel reports.

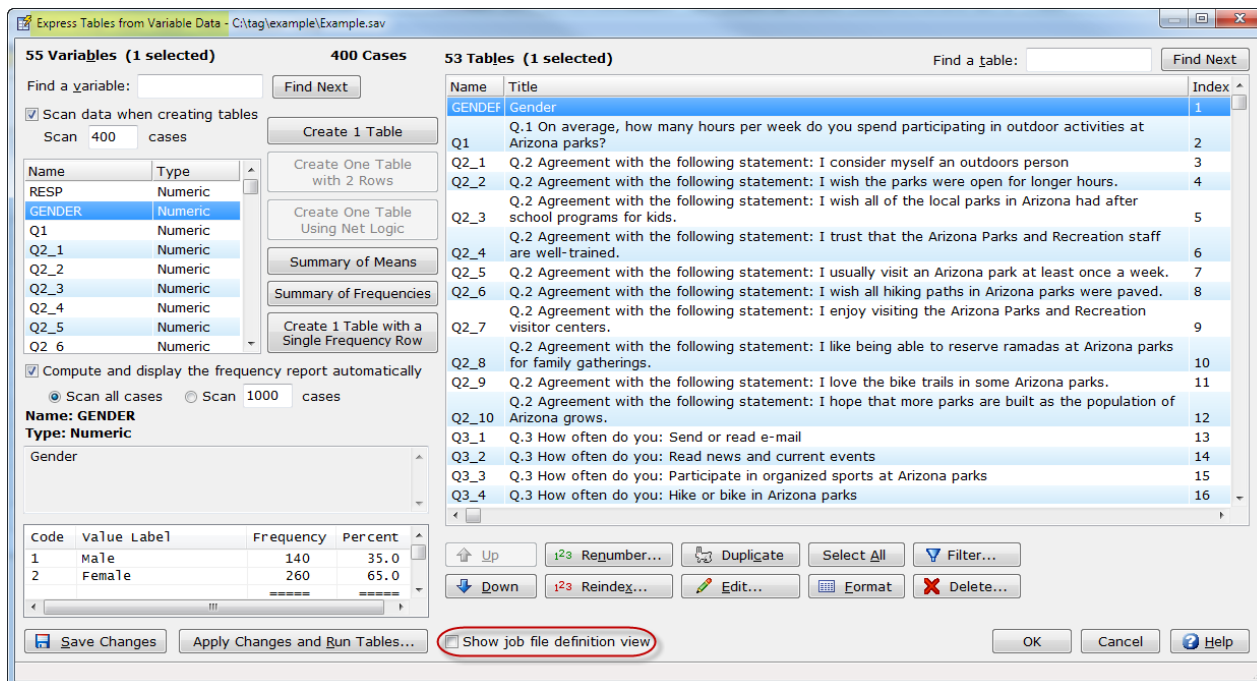


Each column, including **Row Text** is assigned a **Width (in pixels)**. This width can be changed on the **Setup Banners** dialog and is now used for Excel reports whether they are created from **Run|Tables|Excel Options** or from **File|Save|Save Report As (*.xlsx)**.

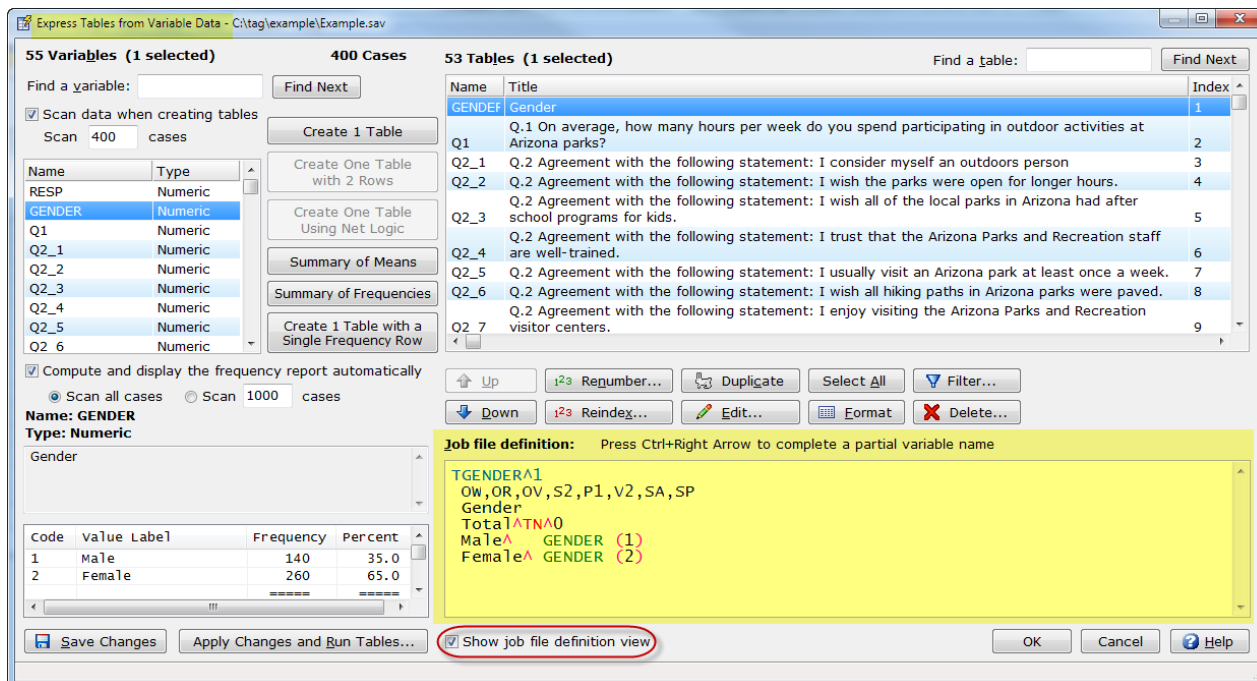
See the WinCross online **Help** topic "**Banners**" for more detailed information about the **Enhanced text reports: banner preview** options.

New Show Job File Definition View Check Box

The **Express Tables from Variable Data** dialog has a new default for displaying the **Job file definition** window. The **Job file definition** window will only display if you enable the new **Show job file definition view** check box.



This new default allows the user to display more tables and to hide the **Job file definition window** if job file editing will not be done using this dialog.

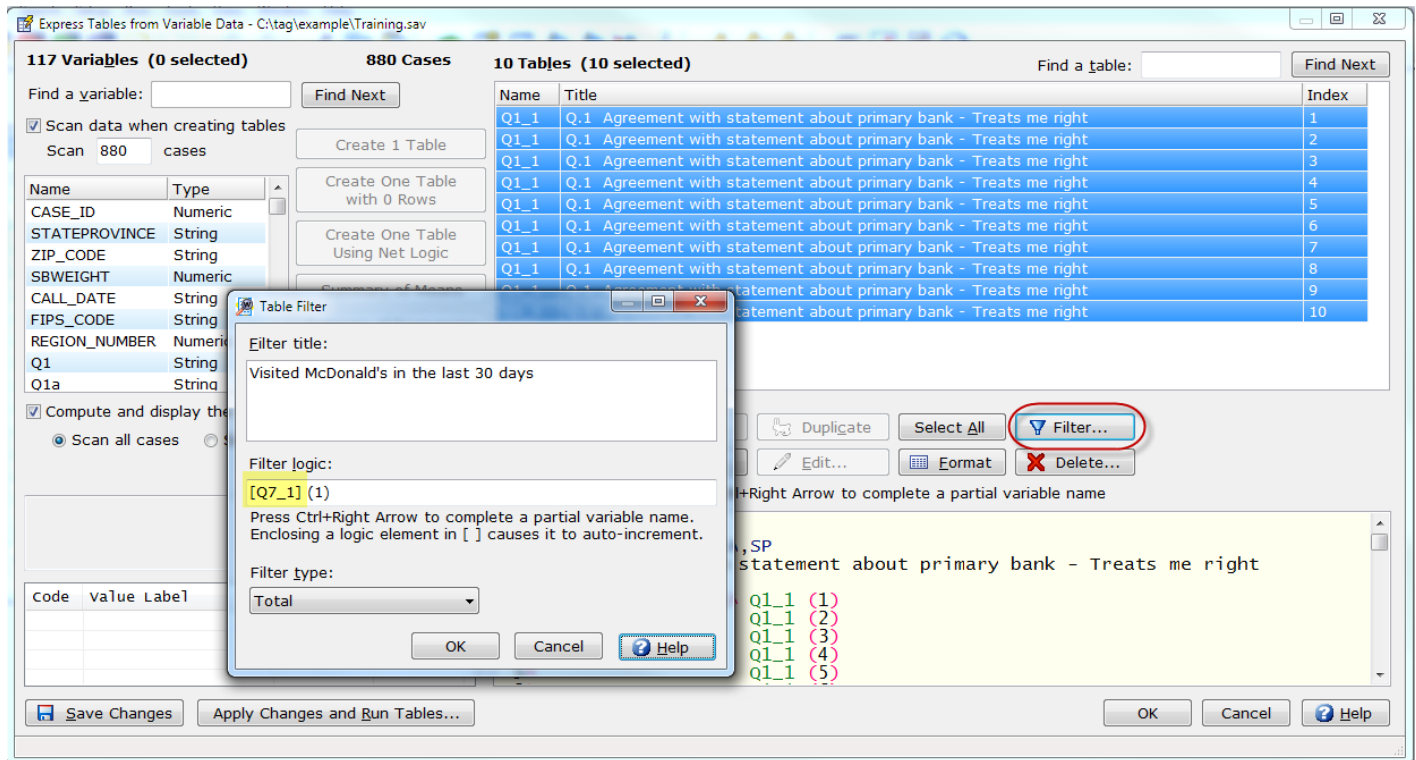


The **Job file definition** window can be easily displayed by enabling the **Show job file definition view** check box. This setting will remain selected across WinCross sessions until it is disabled by the user.

See the WinCross online **Help** topic "*Express Tables from Variable Data*" for more detailed information about this new default and check box.

Table Filter for Express Tables from Variable Data

You can modify filter title, logic and type using the new **Filter** option of **Setup|Express Tables from Variable Data**.



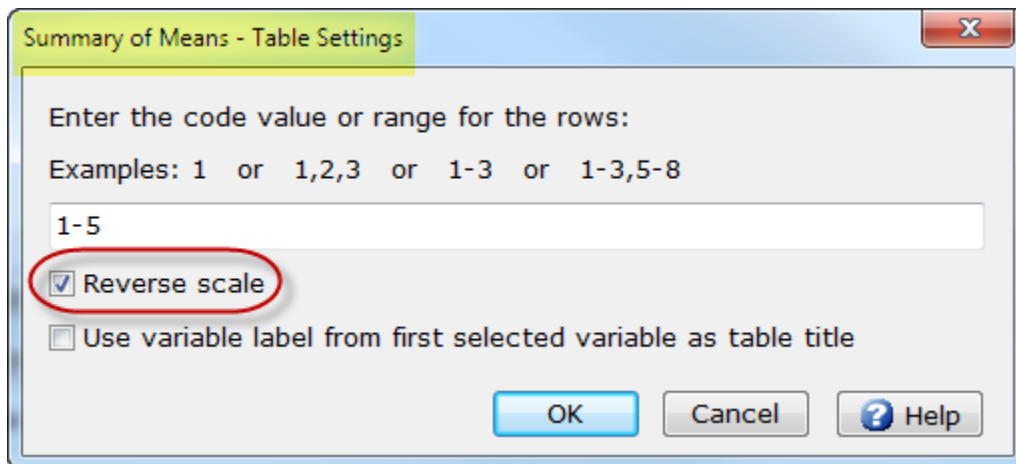
You can modify a group of tables and use square brackets [] around elements in the logic to auto-increment. You can auto-increment a variable name, a numeric or single alphabetic letter portion of a variable name and code values that are numeric or a single alphabetic letter.

This new option now allows you to make changes to the default filter added when you generate tables using **Express Tables from Variable Data**.

See the WinCross online **Help** topic "Table Filter (Express Tables from Variable Data)" for more detailed information about using this new option.

Reverse Scale

You can now reverse the code value scale when creating a **Summary of Means** table from multiple variables using the new **Reverse scale** option of **Express Tables from Variable Data**.



Summary of Means - Table Settings

Enter the code value or range for the rows:
Examples: 1 or 1,2,3 or 1-3 or 1-3,5-8

1-5

Reverse scale

Use variable label from first selected variable as table title

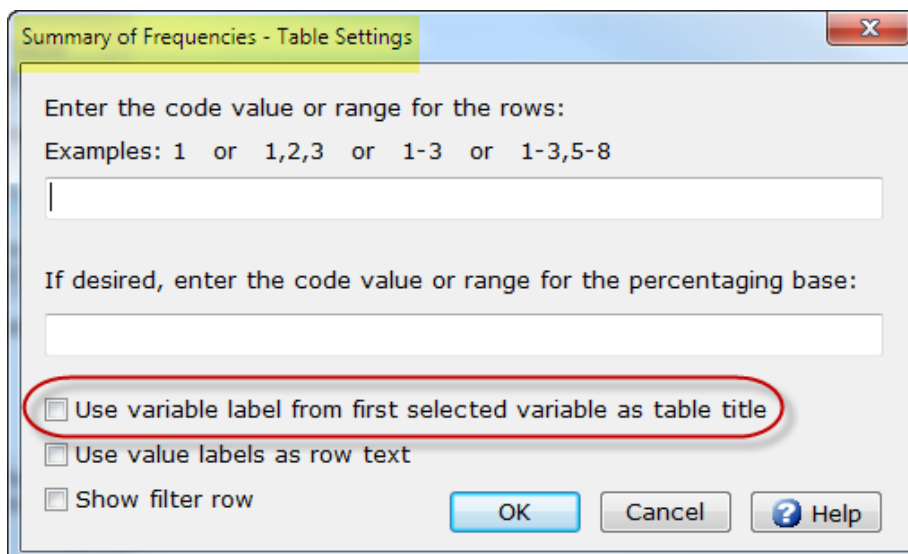
OK Cancel Help

This new option will automatically add the necessary logic for reversing the **Code Values** (for example, ^Q2A (1-5) #1=5,2=4,3=3,4=2,5=1)^SM). In this example, for purposes of computing the mean, the code value 1 becomes a 5, the code value 2 becomes a 4, the code value 3 stays a 3, the code value 4 becomes a 2 and the code value 5 becomes a 1.

See the WinCross online **Help** topic "*Express Tables from Variable Data*" for more detailed information about using this new option.

Use Variable Label from First Selected Variable as Table Title

You can now use the variable label from the first selected variable as the table title when creating a **Summary of Means** or **Summary of Frequencies** table from multiple variables using **Express Tables from Variable Data**.



Summary of Frequencies - Table Settings

Enter the code value or range for the rows:
Examples: 1 or 1,2,3 or 1-3 or 1-3,5-8

If desired, enter the code value or range for the percentaging base:

Use variable label from first selected variable as table title

Use value labels as row text

Show filter row

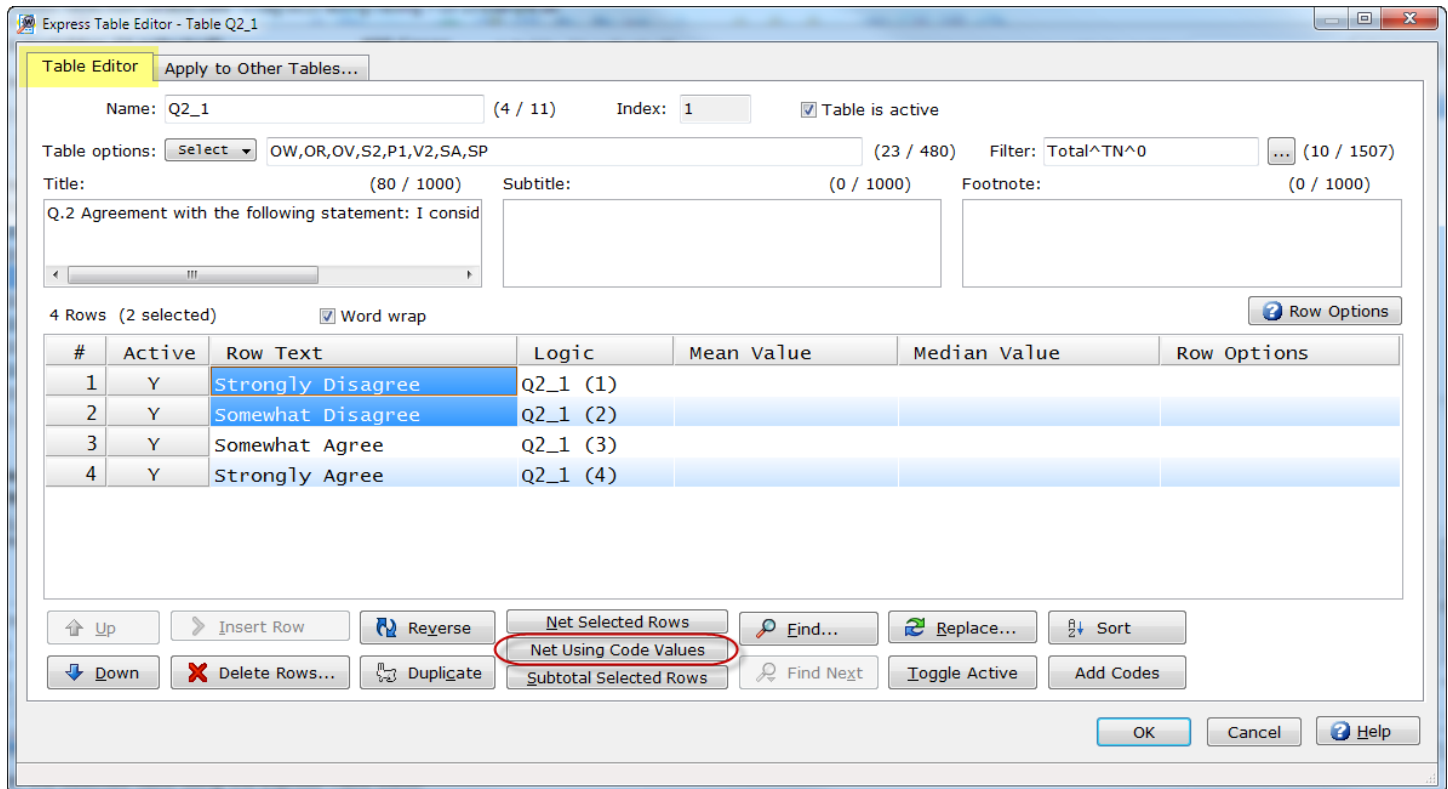
OK Cancel Help

WinCross will use a default table title if the **Use variable label from first selected variable as table title** option is not selected.

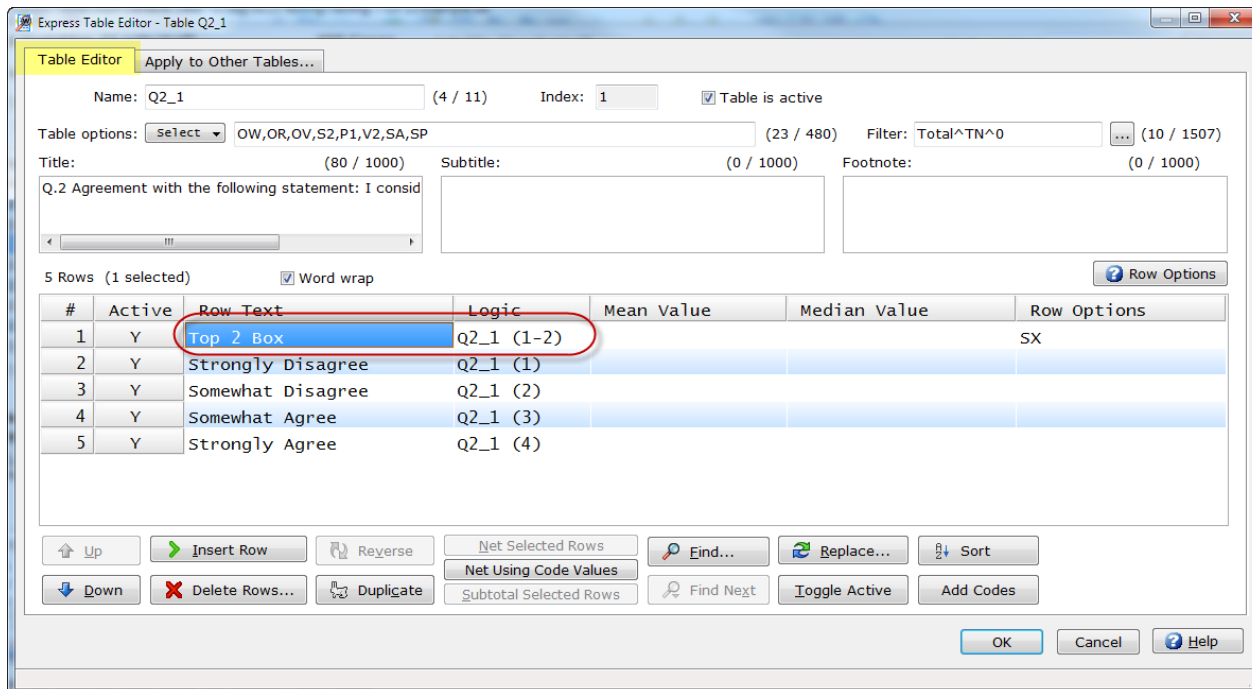
See the WinCross online **Help** topic "*Express Tables from Variable Data*" for more detailed information about using this new option.

Net Using Code Values

The **Table Editor** tab of **Express Tables from Variable Data** has a new option for creating net rows.



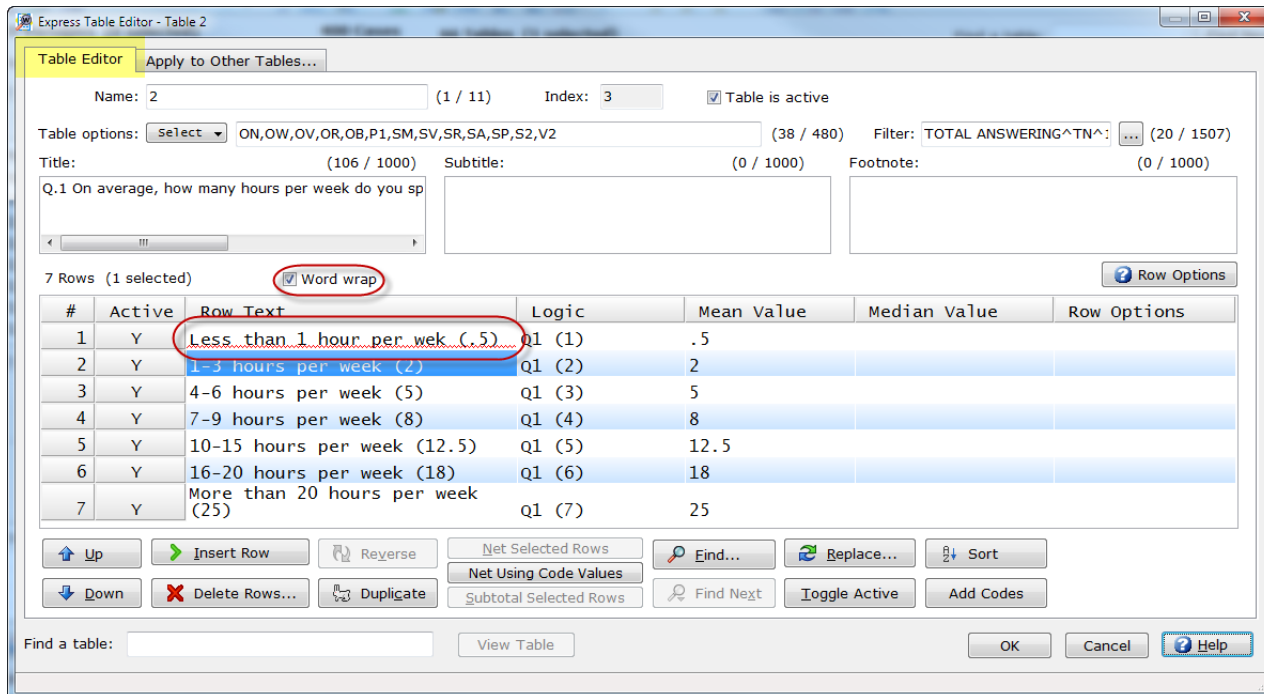
The **Net Using Code Values** option allows you to quickly create a new row using the code values of the selected rows.



See the WinCross online **Help** topic "*Express Table Editor|Table Editor tab*" for more detailed information about using this new option.

Word Wrap and Implicit Spell-checking for Row Text in the Express Table Editor

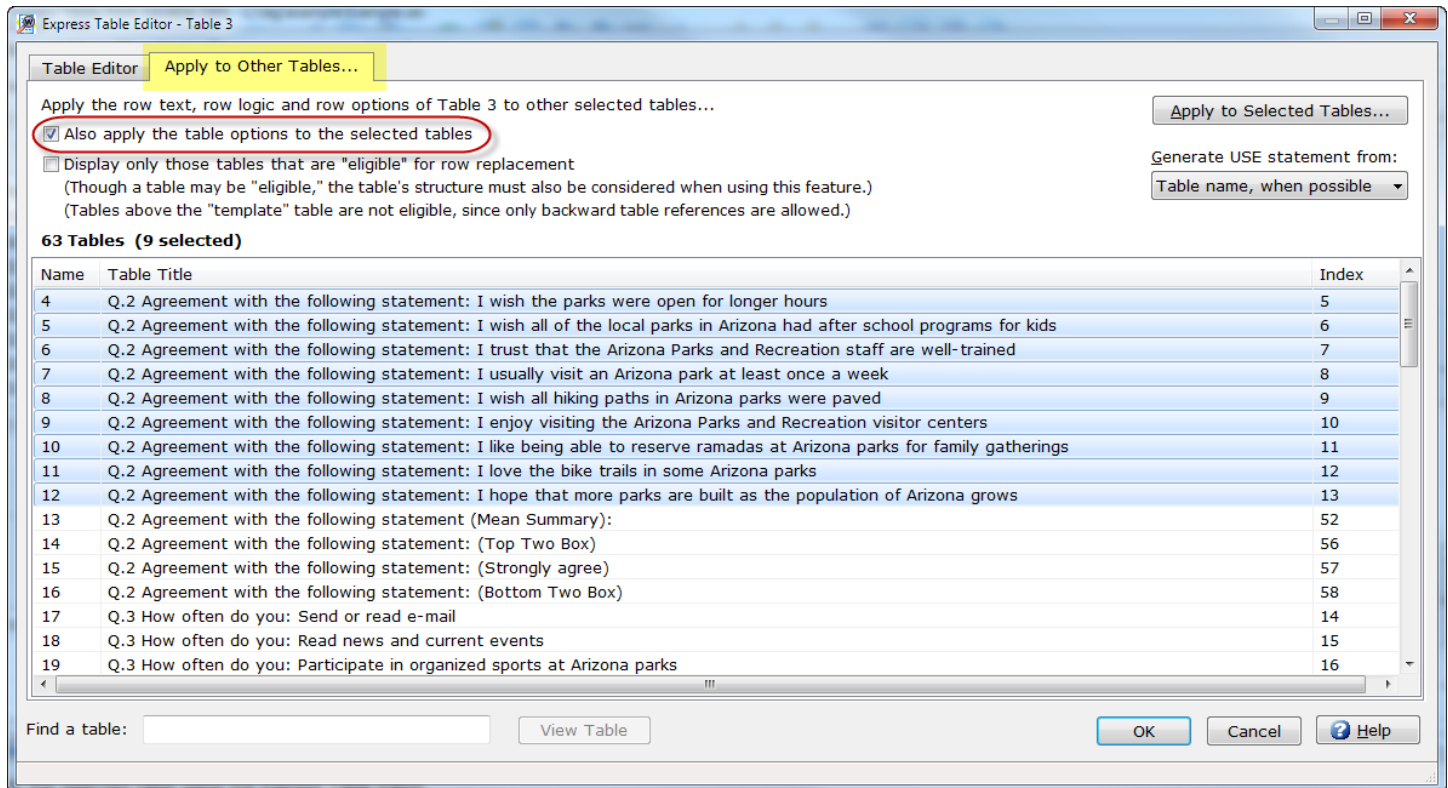
The **Express Table Editor** dialog of **Setup|Express Tables from Variable Data** has added a **Word wrap** option and implicit spell-checking for **Row Text**.



See the WinCross online **Help** topic "*Express Table Editor|Table Editor tab*" for more detailed information about using the new **Word wrap** option and implicit spell-checking for row text.

Apply Table Options to Other Tables in the Express Table Editor

The **Apply to Other Tables** tab of the **Express Table Editor** for **Setup|Express Tables from Variable Data** has a new **Also apply the table options to the selected tables** option.



This new option will use the table options from the selected table when creating **USE** tables. The table options applied from the selected table include any option specified on the 2nd line of the table when viewing the job file using **View|Job File** (for example, OW,OV,OR,OB,P1,SM,SV,SR,SA,SP,S2,V2).

See the WinCross online **Help** topic "*Express Table Editor|Apply to Other Tables tab*" for more detailed information about using this new option.

Get True Nets Using Indexed Variables

WinCross 16 offers several new netting options that allow you to get a true net when using **Indexed Variables**.

Example 1:

IDXNET 3

This logic produces a row showing the net of the next three rows below.

Example 2:

IDXNET
Row 1
Row 2
Row 3
ENDNET

This logic includes the rows between the **IDXNET** and the **ENDNET**. The advantage of using **IDXNET/ENDNET** is that you can add or remove rows from within the logic without the need to change the **IDXNET** logic row.

Example 3:

IDXNET-3

This logic produces a row showing the net of the three previous rows.

See the WinCross online **Help** topic "*NET/IDXNET Feature*" for more detailed information about using these new options.

New Filter Type of Net Total (Indexed) for Tables Using Indexed Variables

You can now get a filter row for respondents (not responses) on a table defined using **Indexed Variables** with the new **Filter type** of **Net Total (Indexed)**.

Filter: Table 1

Filter type

Total Total answering Sigma Net Total (Indexed)

Rows to exclude from...

Total Answering... Sigma...

Filter title: (15 / 480)

TOTAL ANSWERING

Filter logic: (2 / 1024)

TN

Press Ctrl+Right Arrow to complete a partial variable name

Frequency If weighted, show unweighted filter

Vertical Percent If weighted, show effective sample size used for statistics

Horizontal percent Volumetric filter

Constant percent

Hide filter

Show percent sign (%)

Filter title options

Show filter title under table title

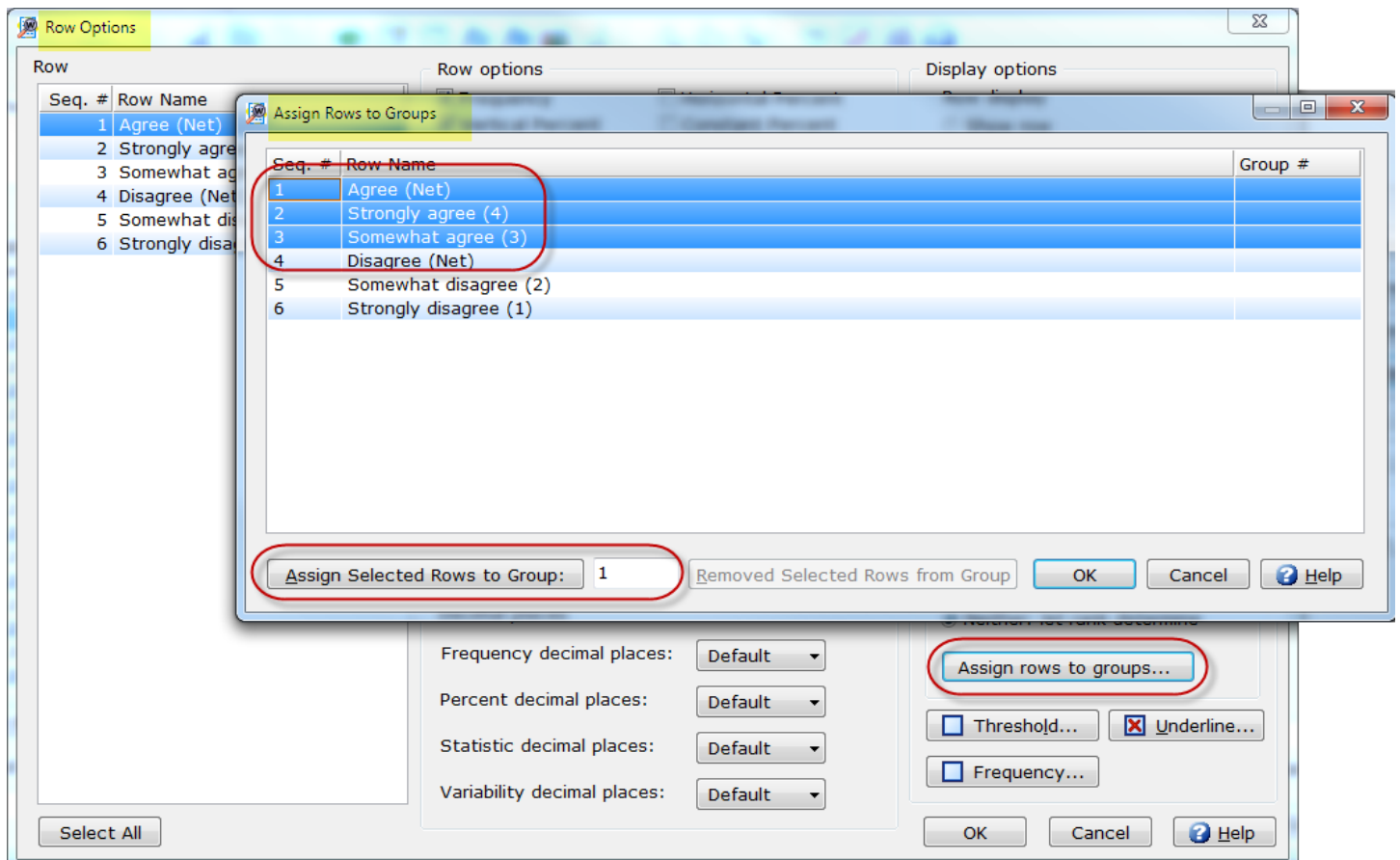
Show filter title on filter row

OK Cancel Help

See the WinCross online **Help** topic "*Table Filter*" for more detailed information about using this new filter type.

Assign Rows to Groups

You can now group rows together under programmed nets when ranking is assigned using the new **Assign rows to groups** option of **Row Options**.

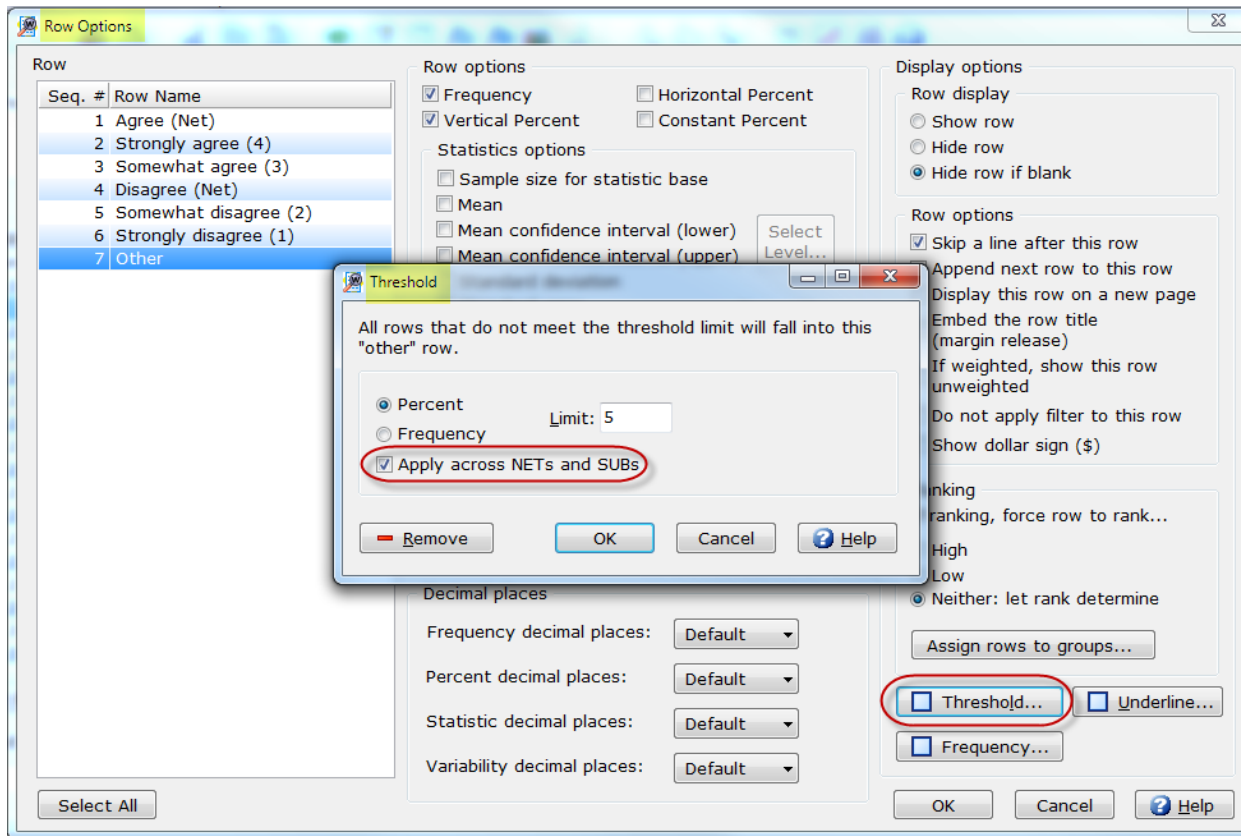


This new option allows for greater control over row placement by grouping rows together when ranking is being used.

See the WinCross online **Help** topic "Assign rows to groups" for more detailed information about using this new row option.

Apply Across NETs and SUBs

The **Threshold** option of **Row Options** has a new addition that will allow you to include rows defined using **NET**, **IDXNET** and **SUB**.

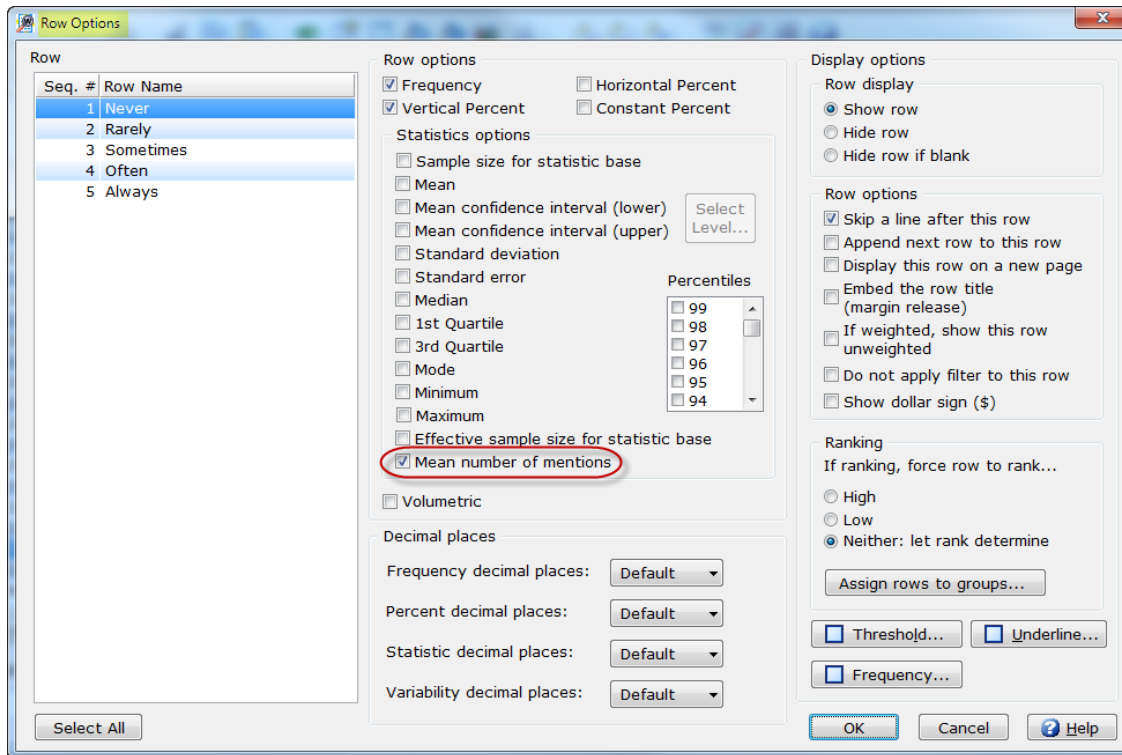


The **Apply across NETs and SUBs** option has been added to allow these rows to be included in threshold determination.

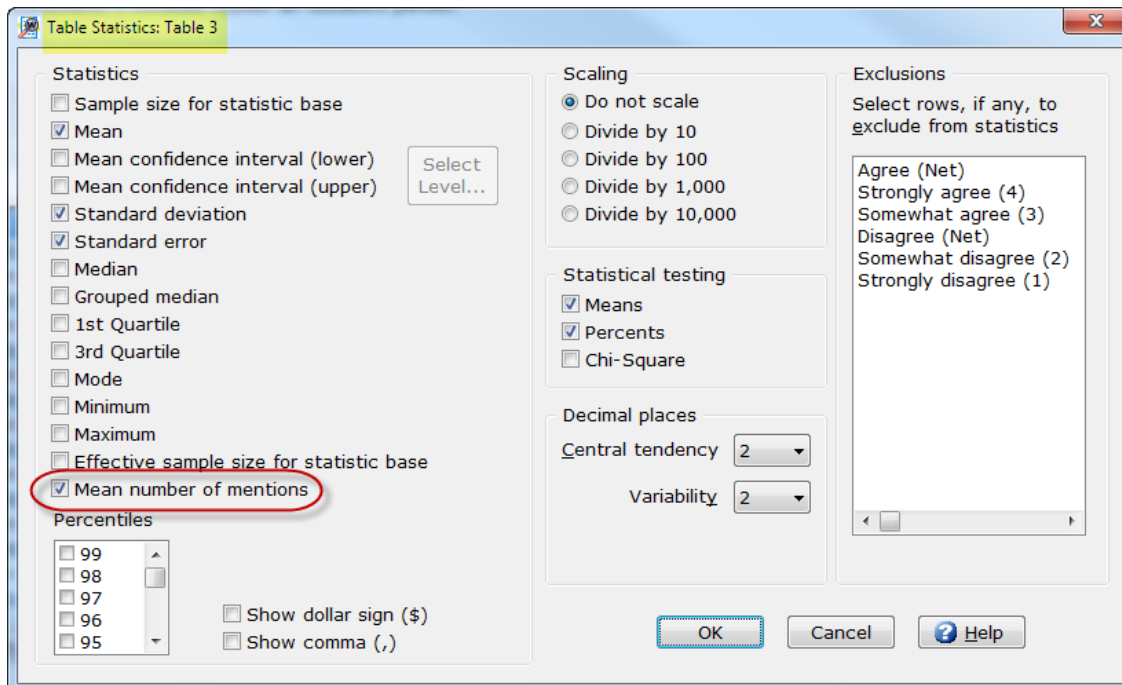
See the WinCross online **Help** topic "*Threshold*" for more information about this new option.

Mean Number of Mentions

Due to popular demand, you can now show the **Mean number of mentions** for both rows and tables.



The row **Statistics** option of **Mean number of mentions** reports the total number of responses divided by the total number of respondents for the row.

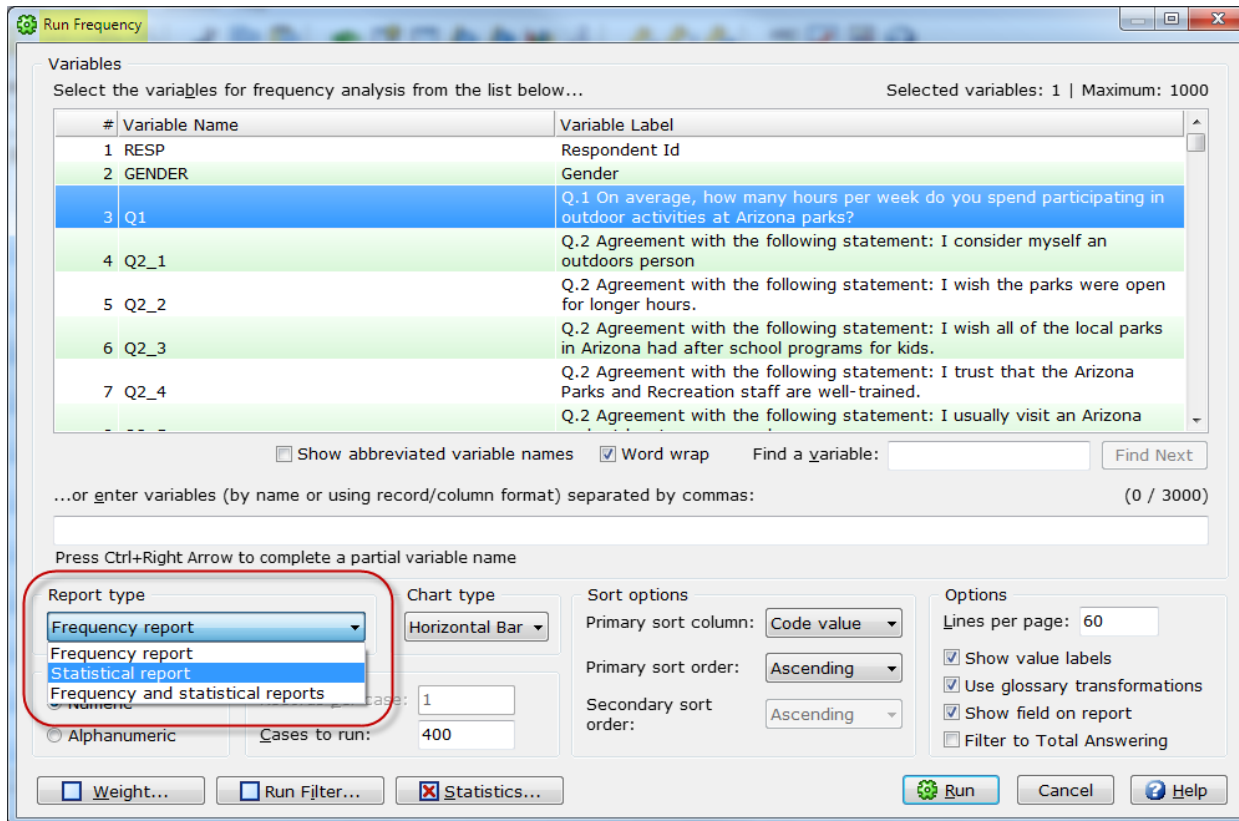


The **Table Statistics** option of **Mean number of mentions** creates a row on your table showing the total number of responses divided by the total number of respondents.

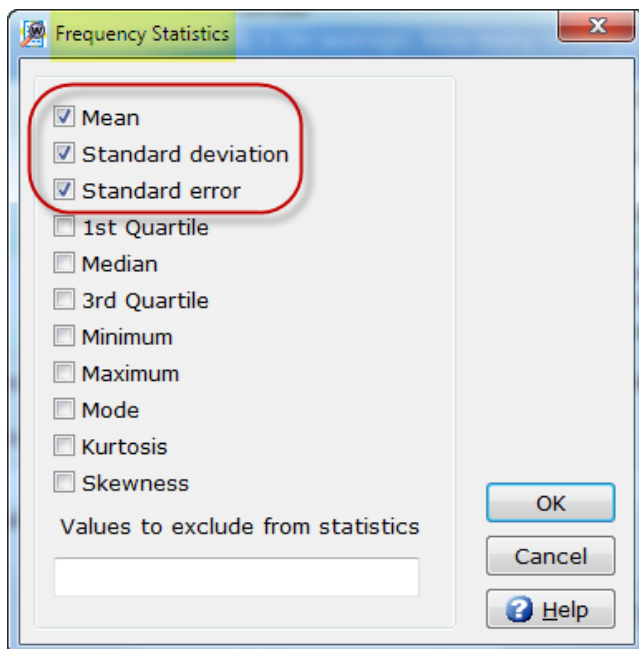
See the WinCross online **Help** topics "Row Options" or "Table Statistics" for more information about these new row and table statistics options.

New Frequency Report Type Options

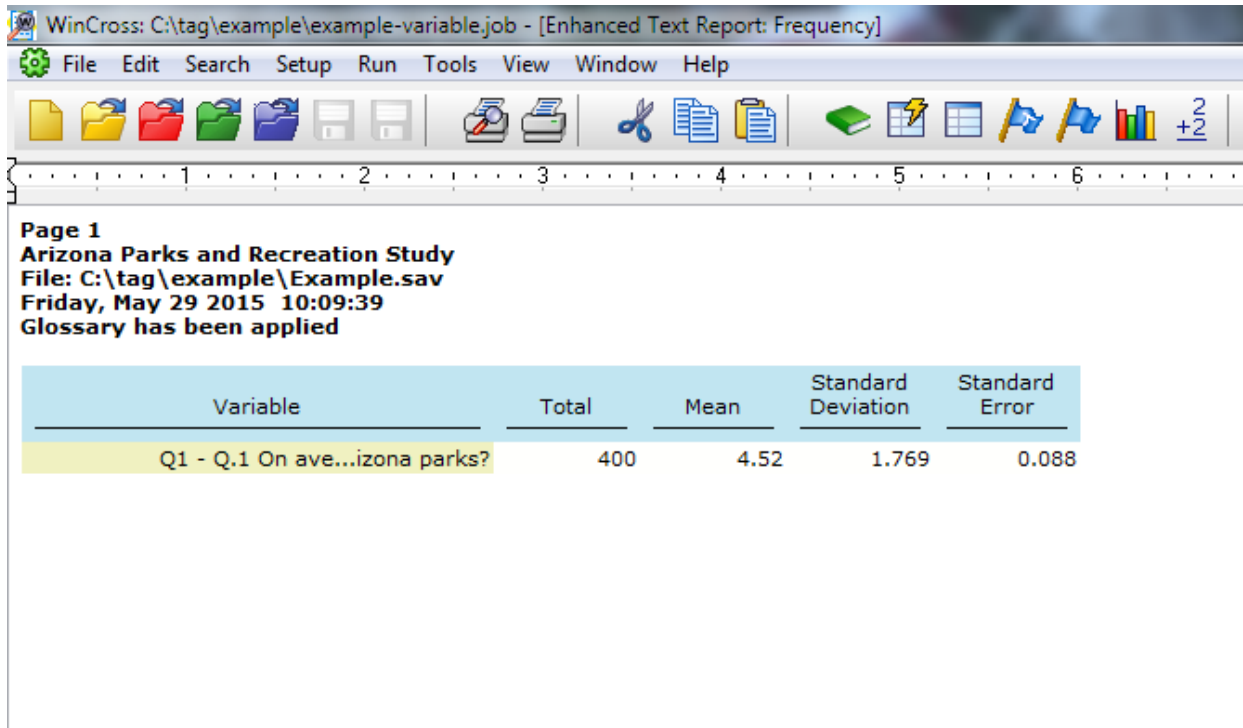
Frequency reports can now be presented for statistics only or with statistics in addition to the standard frequency report.



The **Statistical report** option of **Report type** produces a summary report of statistics selected.



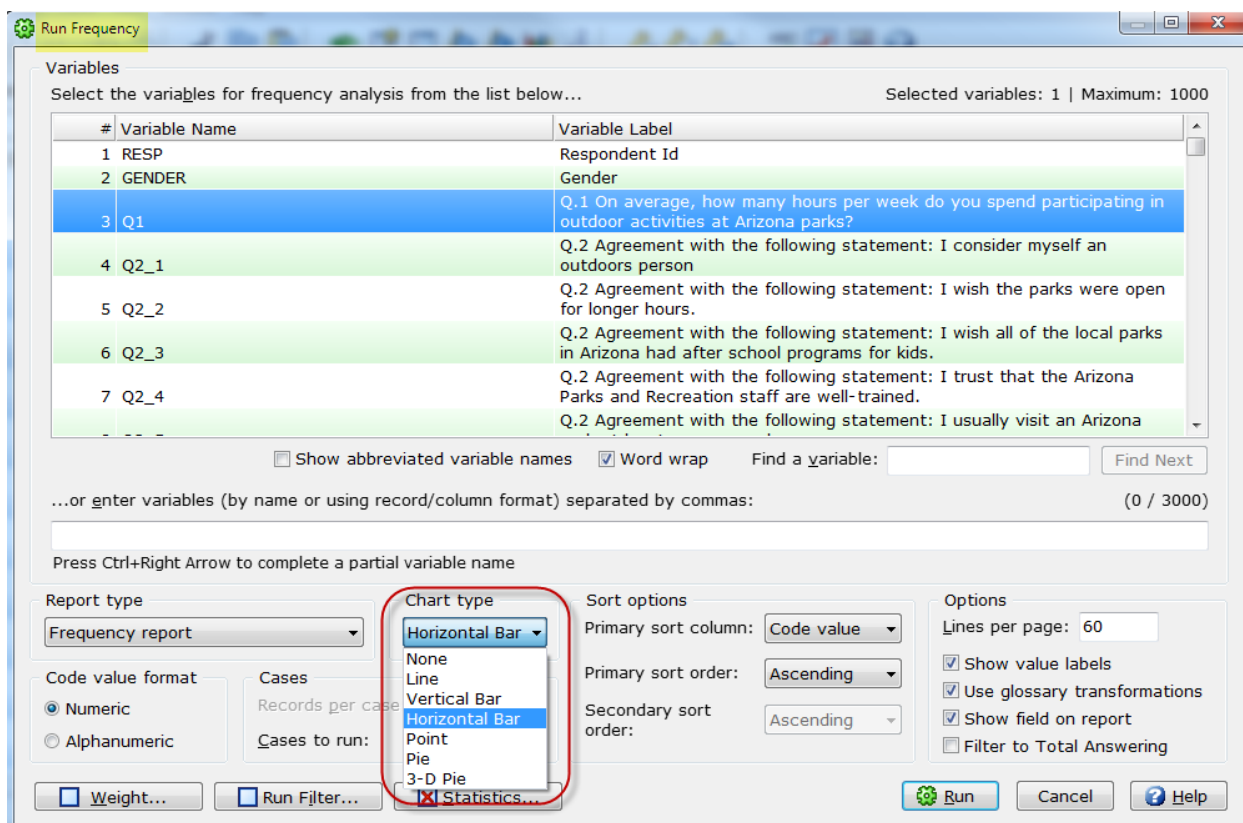
The frequency statistics selected on the **Frequency Statistics** dialog will display on the **Statistical report** portion of the **Frequency Report** when either the **Statistical report** or **Frequency and statistical reports** options are chosen.



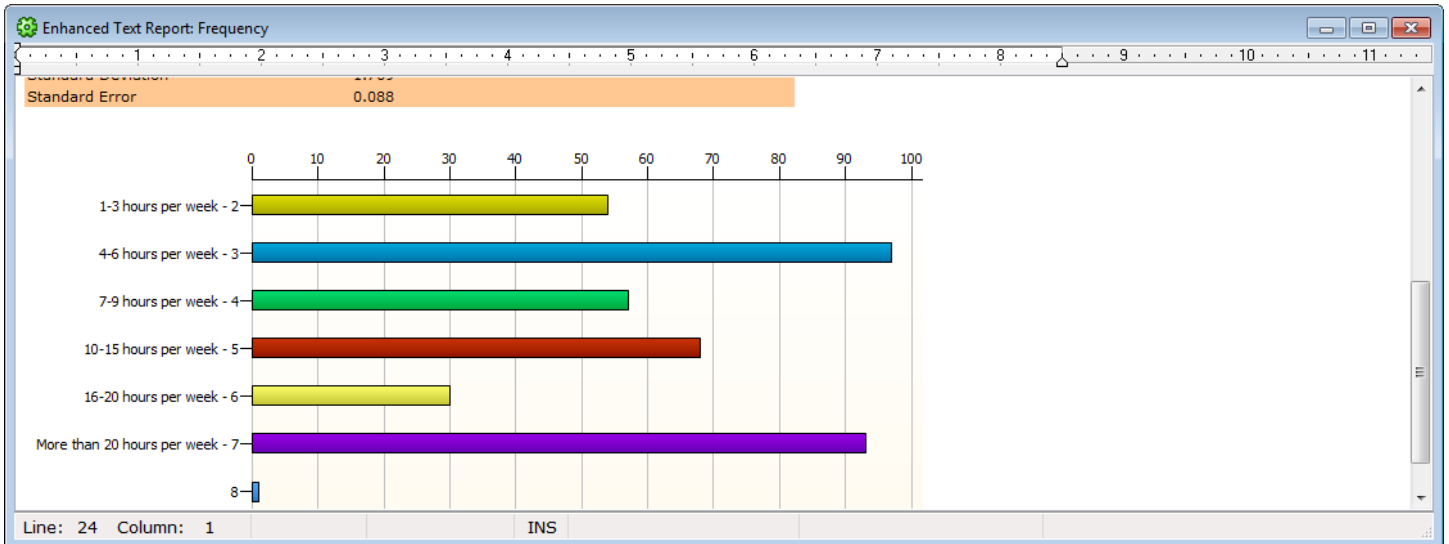
See the WinCross online **Help** topic “Run/Frequency” for more information about these new report type options.

New Frequency Chart Type Options

Frequency reports can now be presented as a selected **Chart type**.



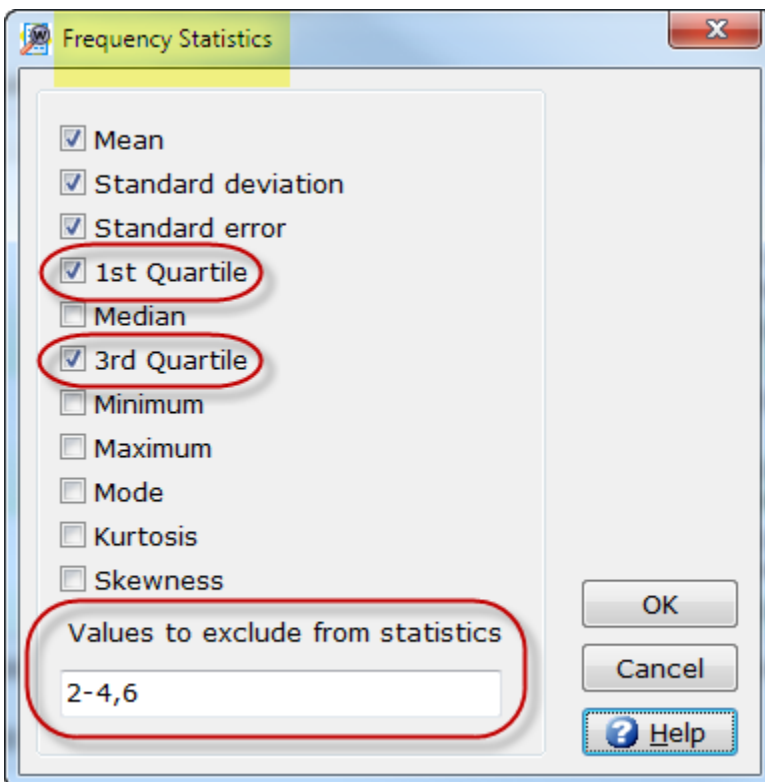
The default chart type is **Horizontal Bar**, but you have the option to choose from the dropdown list of **Chart types** including **None**. Chart type can only be selected when the **Report type** of either **Frequency report** or **Frequency and statistical reports** is selected.



See the WinCross online **Help** topic "*Run|Frequency*" for more information about this new **Chart type** option.

Additional Frequency Statistics Options

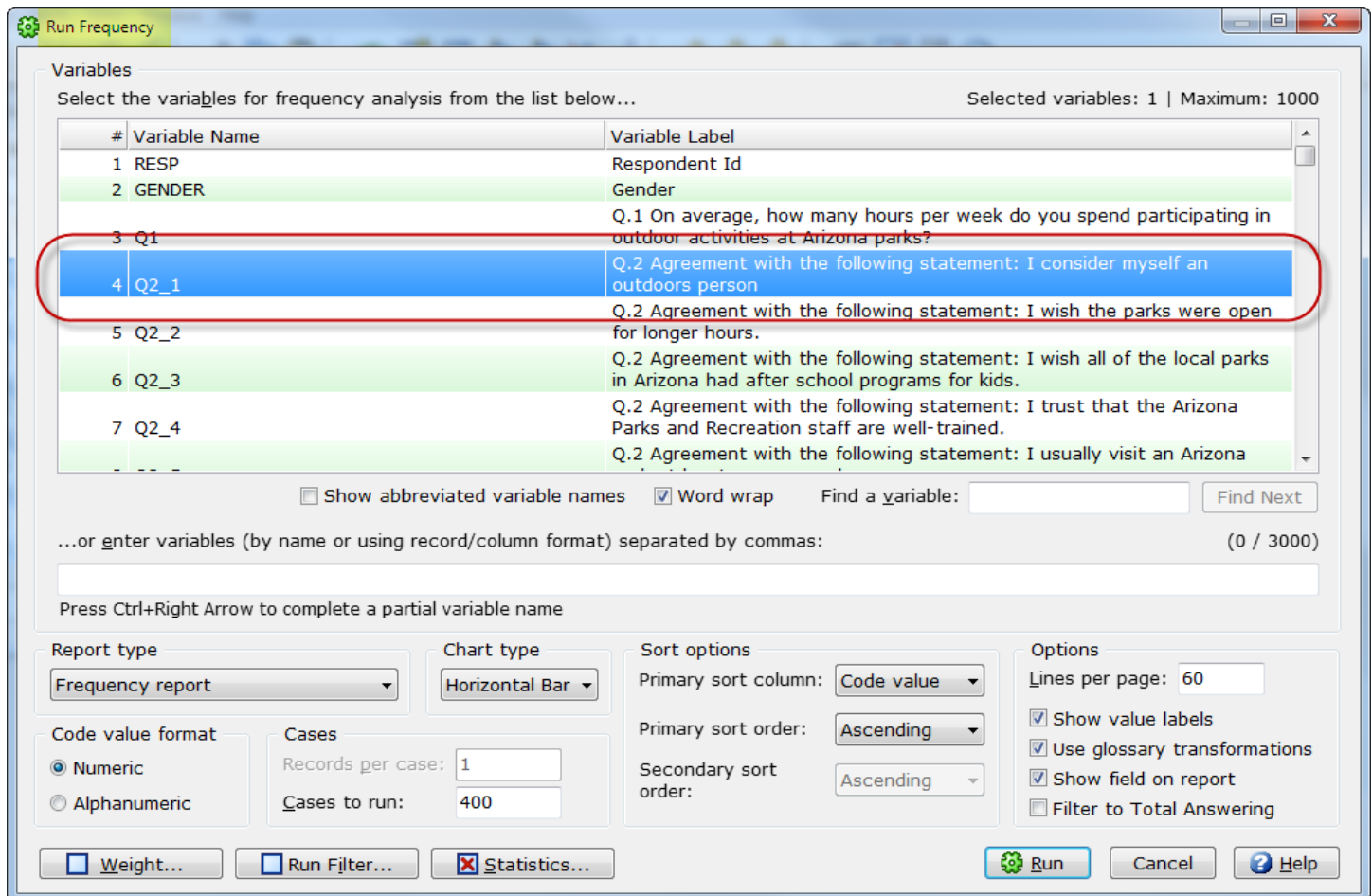
The **Statistics** option of **Run|Frequency** allows you to report additional statistics including the **1st Quartile**, **3rd Quartile** and the option to specify **Values to exclude from statistics**.



See the WinCross online **Help** topics "*Run|Frequency*" and "*Statistics glossary*" for more information about running frequencies and the new statistics options.

Double-click a Single Variable for a Quick Frequency Report

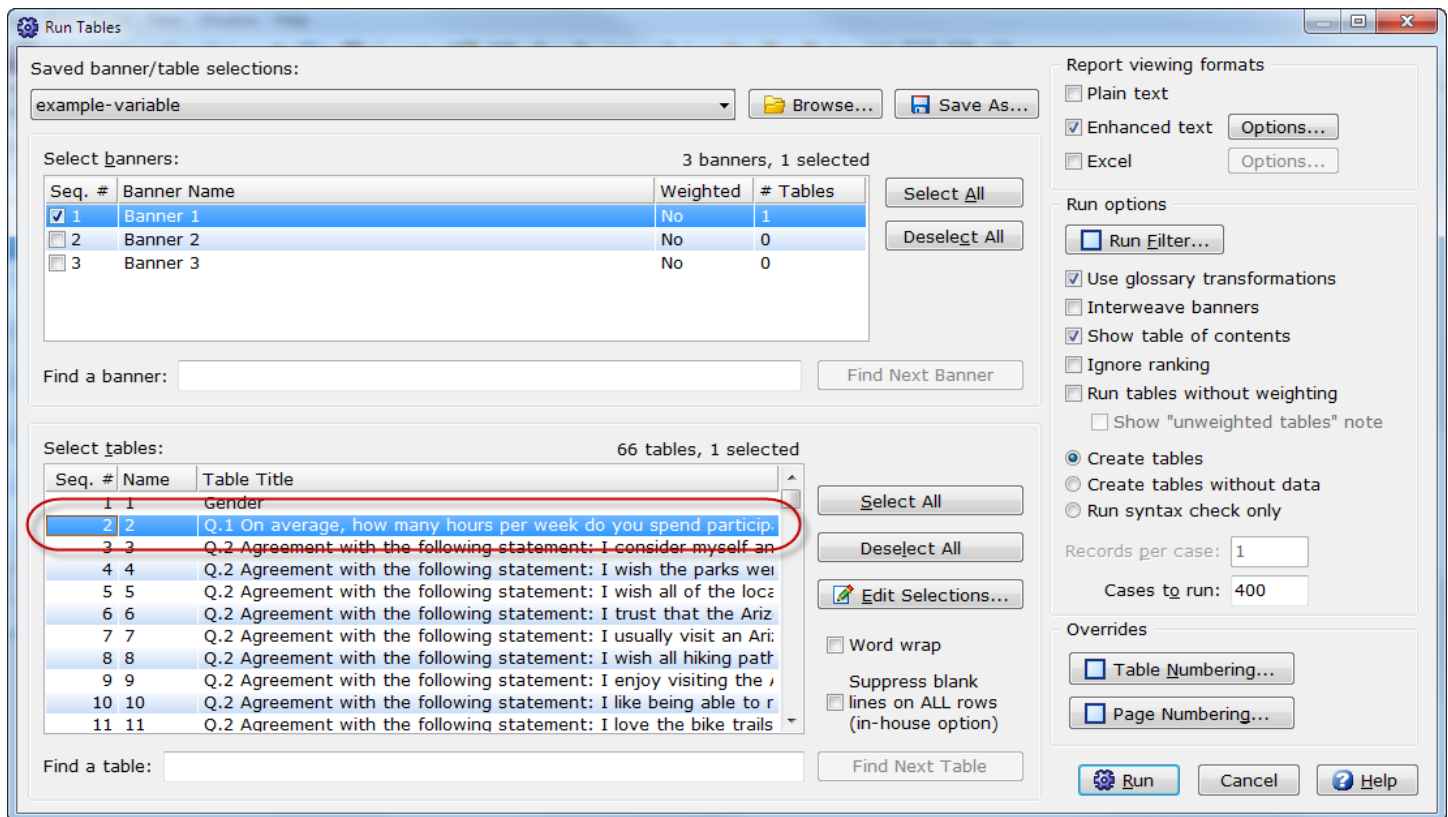
You can now double-click a single variable from the list of variables on the **Run Frequency** dialog to create a quick frequency report.



See the WinCross online **Help** topic "*Run|Frequency*" for more information about frequency options.

Double-click a Single Table for a Quick Report

You can now double-click a single table from the list of tables on the **Run Tables** dialog to create a quick report.

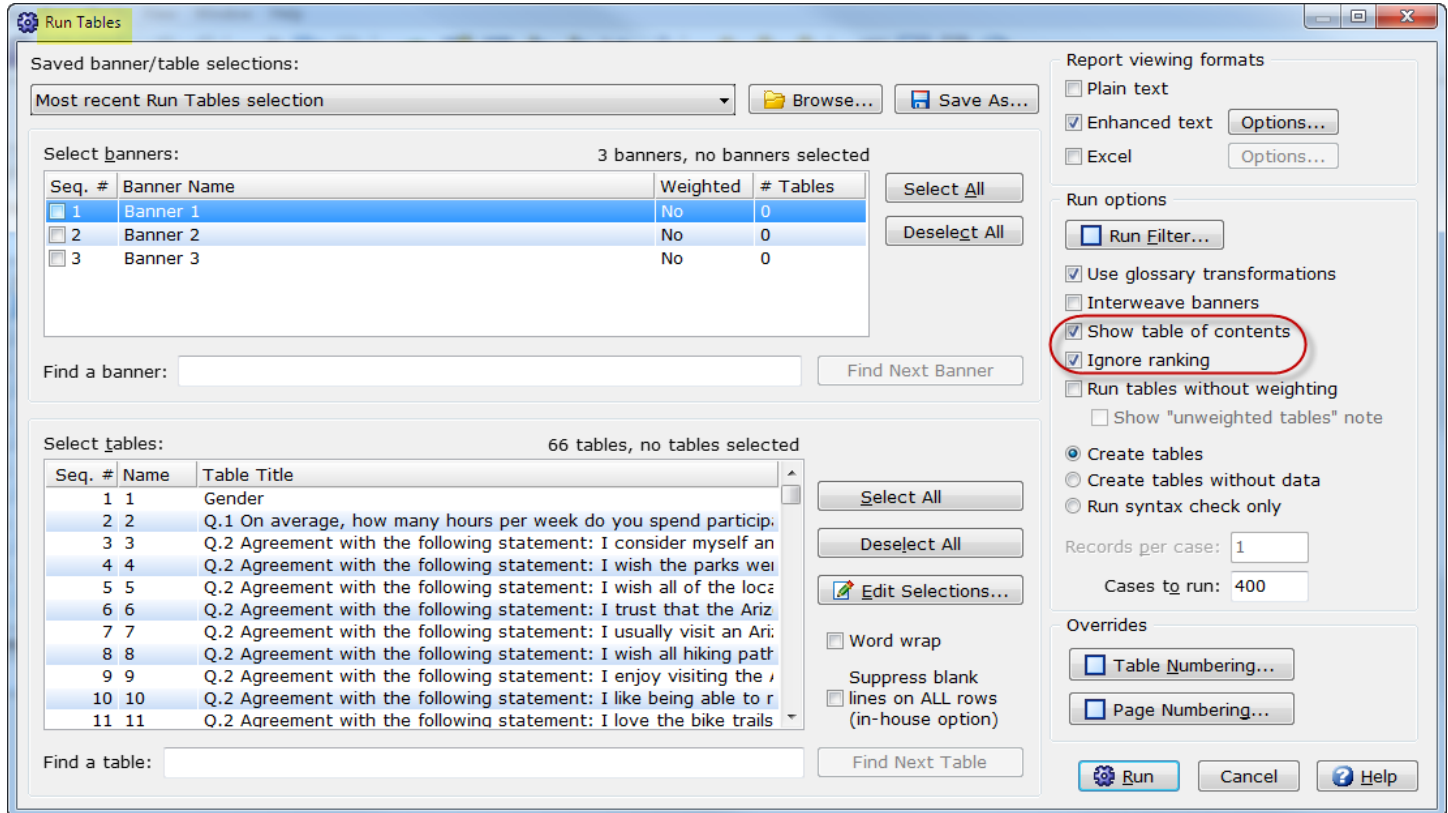


If a banner is selected for that table, it will process the table against that banner. If the table is selected for multiple banners, it will process the table against all of the selected banners. If no banner is selected, the table will be processed with a total column.

See the WinCross online **Help** topic "*Run|Tables*" for more information about options for running tables.

Ignore Ranking

Run|Tables now lets you process tables that are ranked without the ranking applied using the new **Ignore ranking** option. This can be especially useful helpful when checking tables. You can process the tables unranked without having to change the option for all tables.



The **Ignore ranking** option is not retained. Once tables have been processed, this setting is no longer selected.

Show table of contents is the new default for the **Run Tables** dialog. This option will create a table of contents page when tables are processed.

See the WinCross online **Help** topic "*Run|Tables*" for more information about these options.

New Sample Balancing Options

Sample Balancing now offers an alternative technique for avoiding negative weights and allows you to specify the **Goodness of fit** and **Maximum passes** for the preferred **Goodness-of-fit technique**.

1. Choose one or more variables to weight

Variable List

#	Abbreviated	Variable Name
1	RESP	RESP
2	GENDER	GENDER
3	Q1	Q1
4	Q2_1	Q2_1
5	Q2_2	Q2_2

Variables to Weight

#	Abbreviated	Variable Name
53	EDUCATION	EDUCATION
54	INCOME	INCOME

Variables added: 2 | Maximum: 10

2. Set the target percents for each code value for the selected variable

#	Code Values (6)	Value Label	Observed Frequency	Observed Percent	Target Percent
1	1	Some high school or less	8	2.00	15.00
2	2	High school diploma or G.E.D.	78	19.50	25.00
3	3	Some college	148	37.00	8.00
4	4	Associate's degree	60	15.00	31.00

Total: 100%

3. Options

Variable to which weight will be written: WEIGHT

Sample size options

- Calculate to filtered sample size
- Calculate to reduced sample size
- Calculate to a custom sample size

Custom sample size: 400

Cases

Records per case: 1

Cases to write: 400

Iterations

Goodness of fit: 0.0005

Maximum passes: 10

Use goodness-of-fit minimization technique
 Replace negative weights with: 0.001
 Use iterative proportional fitting technique
 (this technique never produces negative weights)

Use glossary transformations Run Filter...

100% - Code value data scanned for variable EDUCATION Weight variable width: 8 Missing values: 0

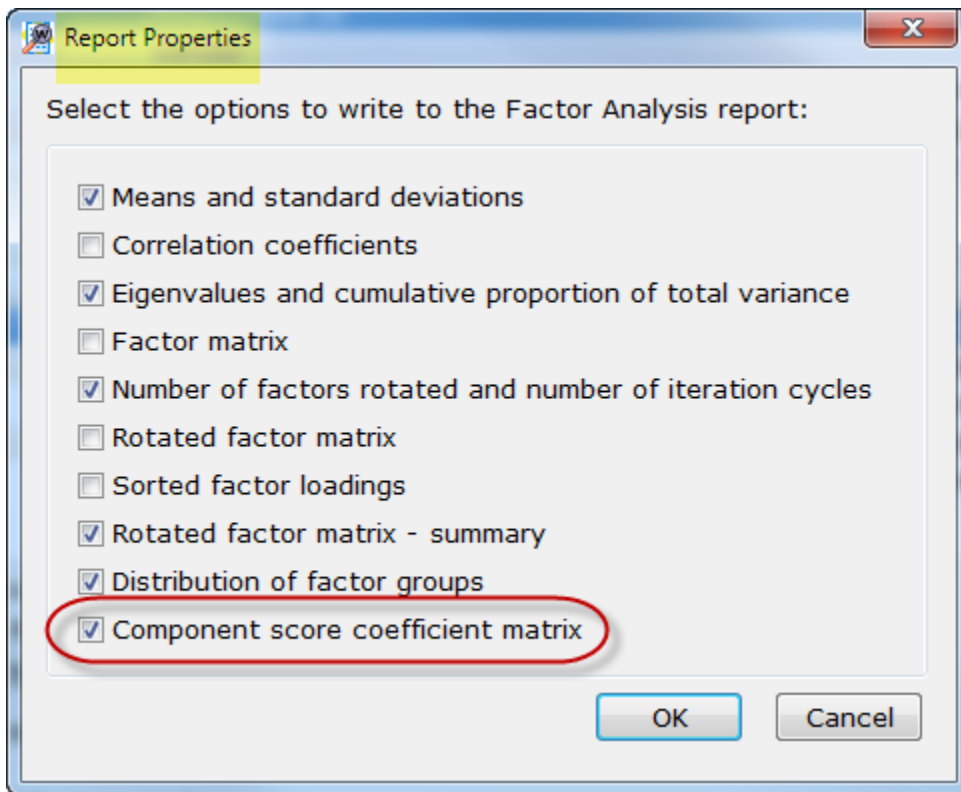
The new **Use iterative proportional fitting technique** computes the sample balancing using the iterative proportional fitting technique and will never result in negative weights; however, this technique has a poorer **Criterion of Goodness of Fit**.

Goodness of fit and **Maximum passes** can now be specified for the **Use goodness-of-fit minimization technique**.

See the WinCross online **Help** topics "*Sample Balancing: Variable data*" or "*Sample Balancing: ASCII data*" for more information about these new **Sample Balancing** options.

New Factor Analysis Report Properties Option

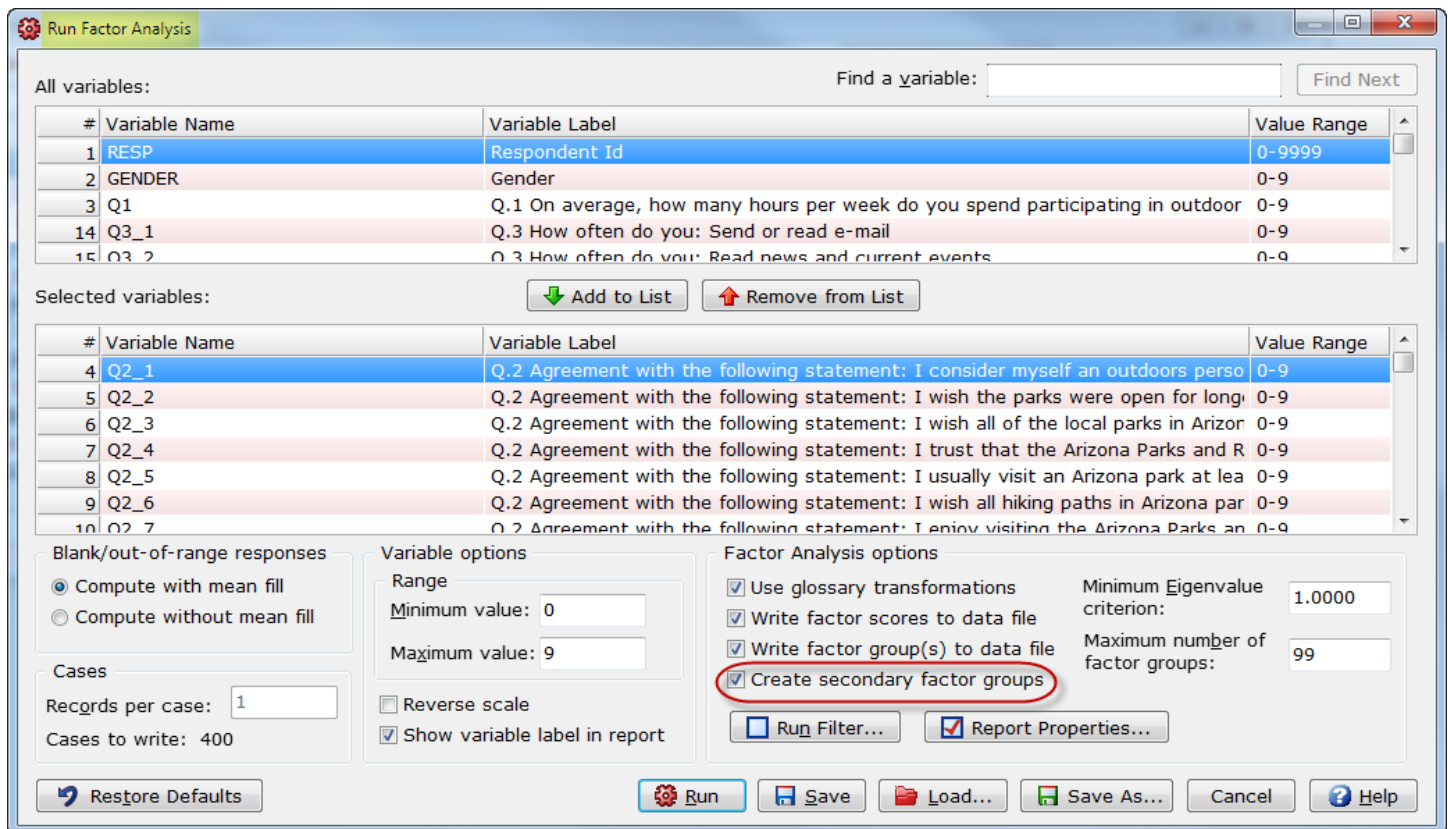
Factor Analysis has added a new **Component score coefficient matrix** option to its **Report Properties** list of reporting options.



See the WinCross online **Help** topics "*Factor Analysis: Variable data*" or "*Factor Analysis: ASCII data*" for more information about Factor Analysis reporting options.

Create Secondary Factor Groups in Factor Analysis

Factor Analysis will now assign respondents to a secondary factor group when applicable if the **Create secondary factor groups** option is selected.



WinCross uses the highest factor score to determine which factor group is the best fit. In some instances, the highest factor score and the second highest factor score can be very similar. WinCross will determine if the respondent should also be assigned to a secondary factor group.

See the WinCross online **Help** topics "*Factor Analysis: ASCII data*" or "*Factor Analysis: Variable data*" for more information about this new option.

Enhanced Text Reports for Sample Balancing and Factor Analysis

Sample Balancing and Factor Analysis reports are now produced as colorful **Enhanced Text Reports**.

Sample Balancing

Respondent Data

Job File: C:\tag\example\example-variable.job
 Input Data File: C:\tag\example\Example.sav
 Output Data File: C:\tag\example\Example with weights.sav
 Run Date: Monday, Jun 01 2015 14:41:45
 Computation type: Goodness-of-fit minimization
 There are 60 frequency cells.
 There are 13 zero-frequency cells.

EDUCATION

	Some high school or less	High school diploma or G.E.D.	Some college	Associate's degree	Bachelor's degree	Graduate or professional degree
Rim weights	6.57	0.67	-0.53	1.32	-0.62	-1.77
Observed count	8	78	148	60	71	35
Observed percent	2.00	19.50	37.00	15.00	17.75	8.75
Target count	60	100	32	124	64	20
Target percent	15.00	25.00	8.00	31.00	16.00	5.00

INCOME

	Under \$30,000	Between \$30,000 and \$39,000	Between \$40,000 and \$49,000	Between \$50,000 and \$59,000	Between \$60,000 and \$74,000	Between \$75,000 and \$99,000	Between \$100,000 and \$149,000	Between \$150,000 and \$199,000	Between \$200,000 and \$249,000	Between \$250,000 or above
Rim weights	-0.87	-0.77	0.14	-0.08	0.93	0.20	4.46	1.30	17.57	4.56
Observed count	128	92	43	43	35	26	22	6	1	4
Observed percent	32.00	23.00	10.75	10.75	8.75	6.50	5.50	1.50	0.25	1.00
Target count	40	40	40	40	61	19	110	13	17	20
Target percent	10.00	10.00	10.00	10.00	15.20	4.80	27.60	3.20	4.20	5.00

Balancing statistics

Line: 1 Column: 1 INS C:\tag\example\Example.sav

These new **Enhanced Text Reports** can also now be saved in XML, PDF and PowerPoint formats.

Factor Analysis

Respondent Data:

Job File: C:\tag\example\example-variable.job
 Input Data File: C:\tag\example\Example.sav
 Output Data File: C:\tag\example\Example with factor scores and groups.sav
 Run Date: Monday, Jun 01 2015 14:47:21

Total Number of respondents: 400
 Number of respondents removed from analysis: 0
 Number of respondents analyzed: 400
 Number of variables: 10

**Mean fill was used on all variables.
 Respondents with missing data were ignored.**

Statistics:

Variable	Means	Standard Deviations
Q.2 Agreement with the following statement: I consider myself an out...	3.220000	0.879790
Q.2 Agreement with the following statement: I wish the parks were ope...	2.750000	1.000000
Q.2 Agreement with the following statement: I wish all of the local p...	3.420000	0.781105
Q.2 Agreement with the following statement: I trust that the Arizona ...	3.722500	0.613543
Q.2 Agreement with the following statement: I usually visit an Arizon...	2.805000	1.113587
Q.2 Agreement with the following statement: I wish all hiking paths ...	2.712500	0.931134
Q.2 Agreement with the following statement: I enjoy visiting the Ariz...	3.140000	0.834951
Q.2 Agreement with the following statement: I like being able to rese...	3.060000	0.820416
Q.2 Agreement with the following statement: I love the bike trails in ...	2.717500	0.961772
Q.2 Agreement with the following statement: I hope that more parks ar...	2.857500	0.956284

Variance:

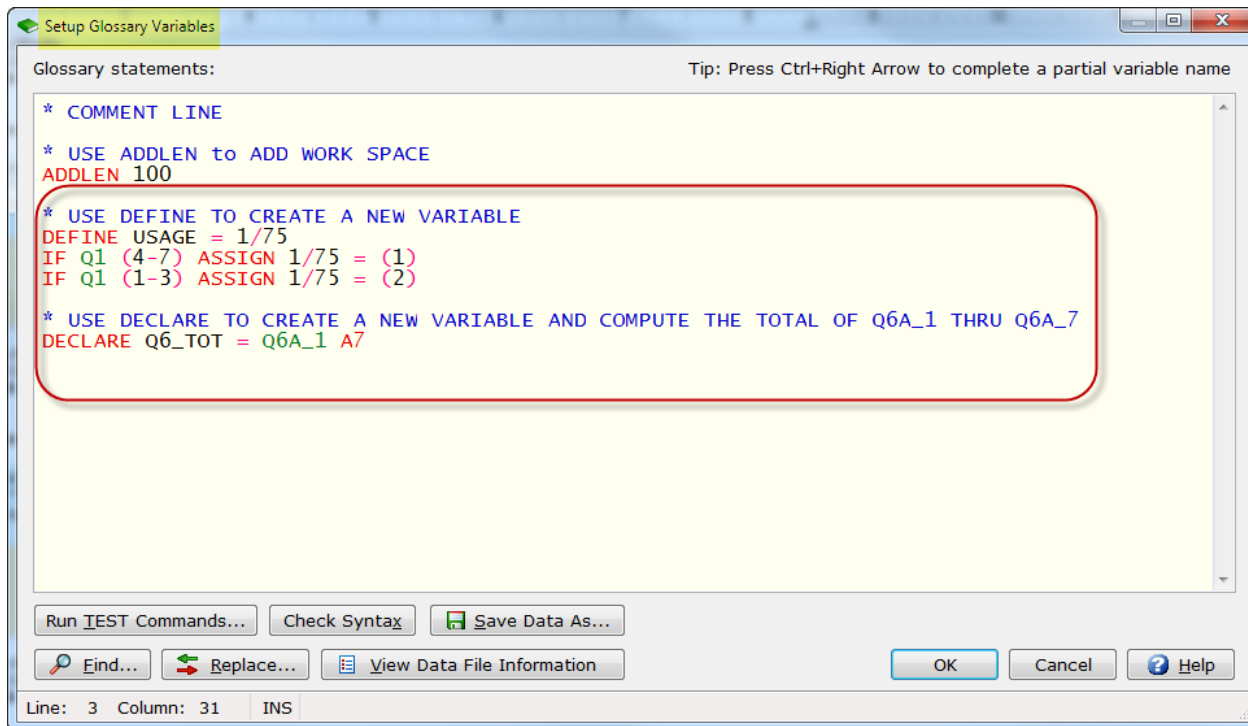
Factor	Eigenvalues	Cumulative proportion of variance explained
1	1.000000	10.000000
2	0.879790	21.740000
3	1.000000	31.740000
4	0.781105	39.551000
5	0.613543	45.686500
6	1.113587	56.822500
7	0.931134	66.133800
8	0.834951	74.478800
9	0.820416	82.682900
10	0.961772	92.300600

Line: 22 Column: 2 INS C:\tag\example\Example.sav

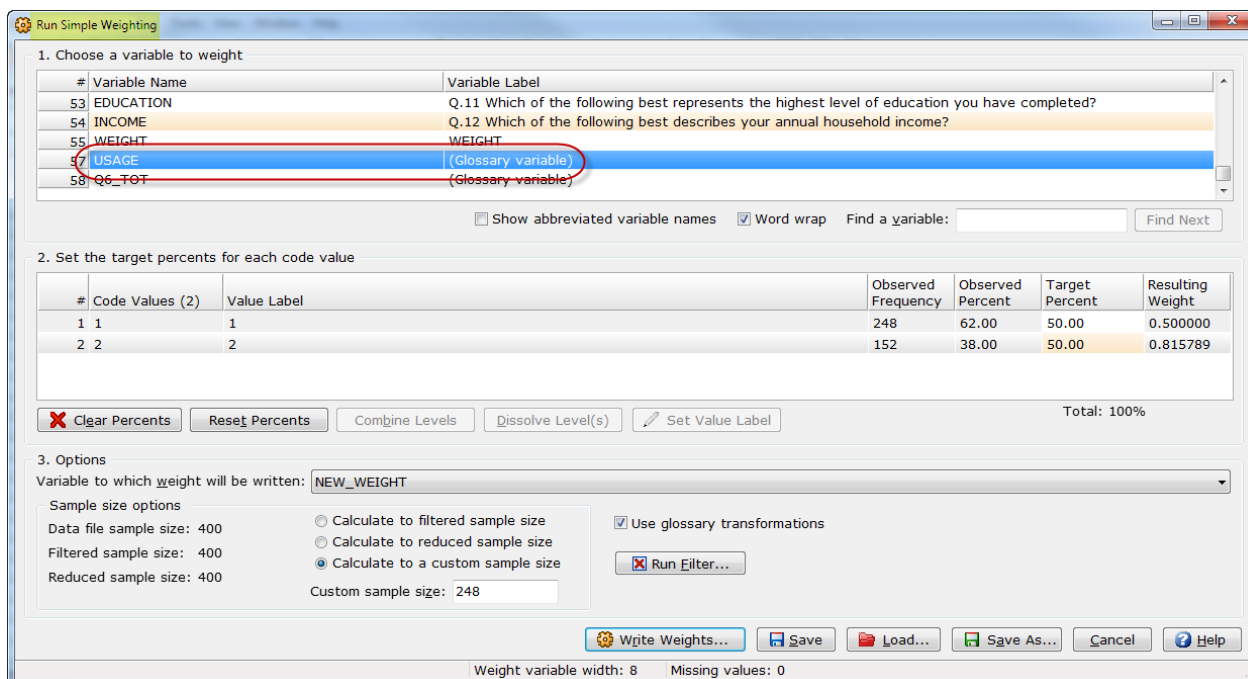
See the WinCross online **Help** topics "*About Sample Balancing*" or "*About Factor Analysis*" for more information about **Sample Balancing** and **Factor Analysis**.

Use Variables Defined or Declared in the Glossary for Running Frequencies, Simple Weighting, Sample Balancing or Factor Analysis

Variables defined in the **Glossary** with simple logic (for example, *DEFINE NEW_VAR = 1/75*) or variables created using the new **DECLARE** instruction (for example, *DECLARE Q6_TOT = Q6A_1 A7*) are included in the **Variable List** if the **Use glossary transformations** option is enabled.



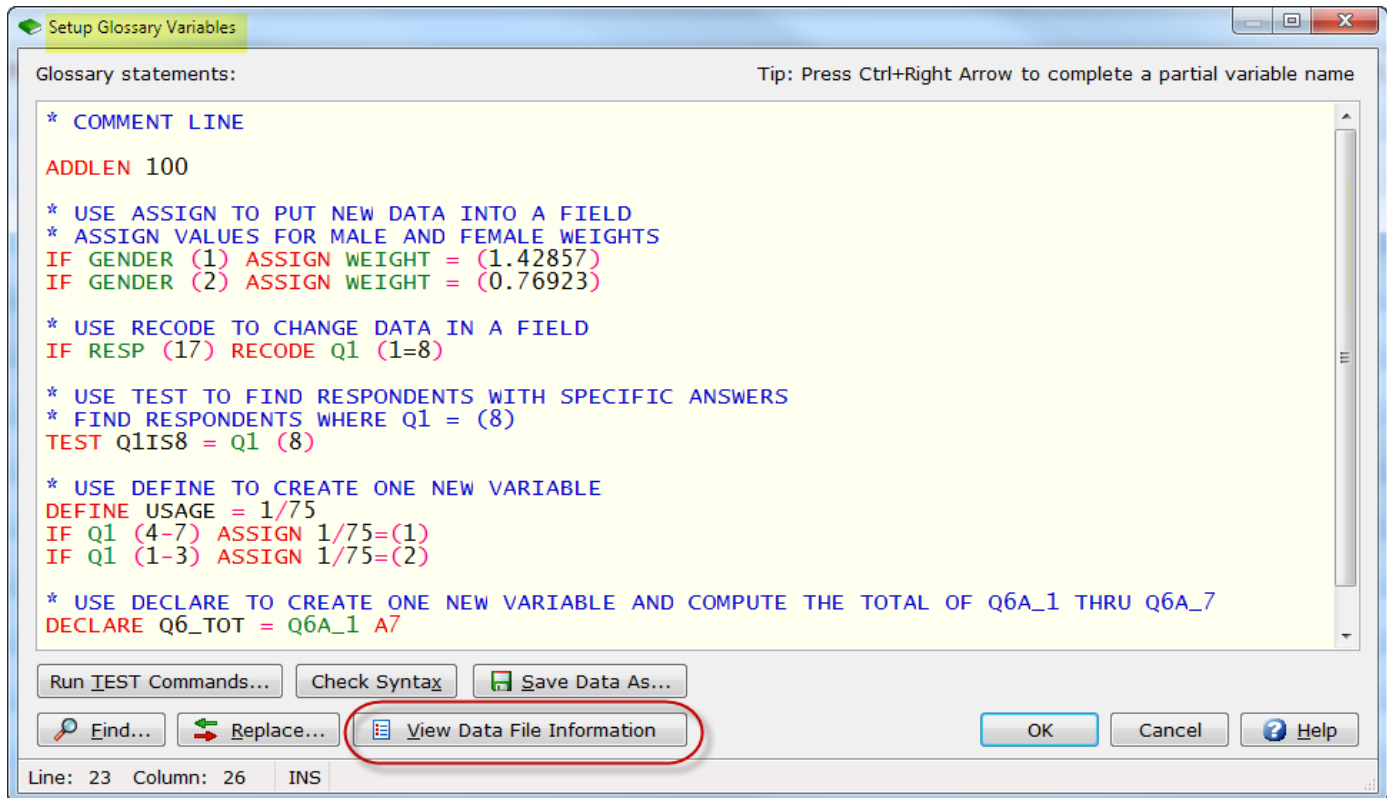
This allows you to use these new variables in **Frequencies**, **Simple Weighting**, **Sample Balancing** or **Factor Analysis**.



See the WinCross online **Help** topics "Run/Frequency", "Simple Weighting: Variable Data", "Sample Balancing: Variable Data", "Factor Analysis: Variable Data", "DECLARE" or "DEFINE" for more information about using variables defined in the **Glossary**.

View Data File Information from Setup Glossary Variables

You can now review the variables in your data file when writing **Glossary** statements without having to exit the **Setup Glossary Variables** dialog.

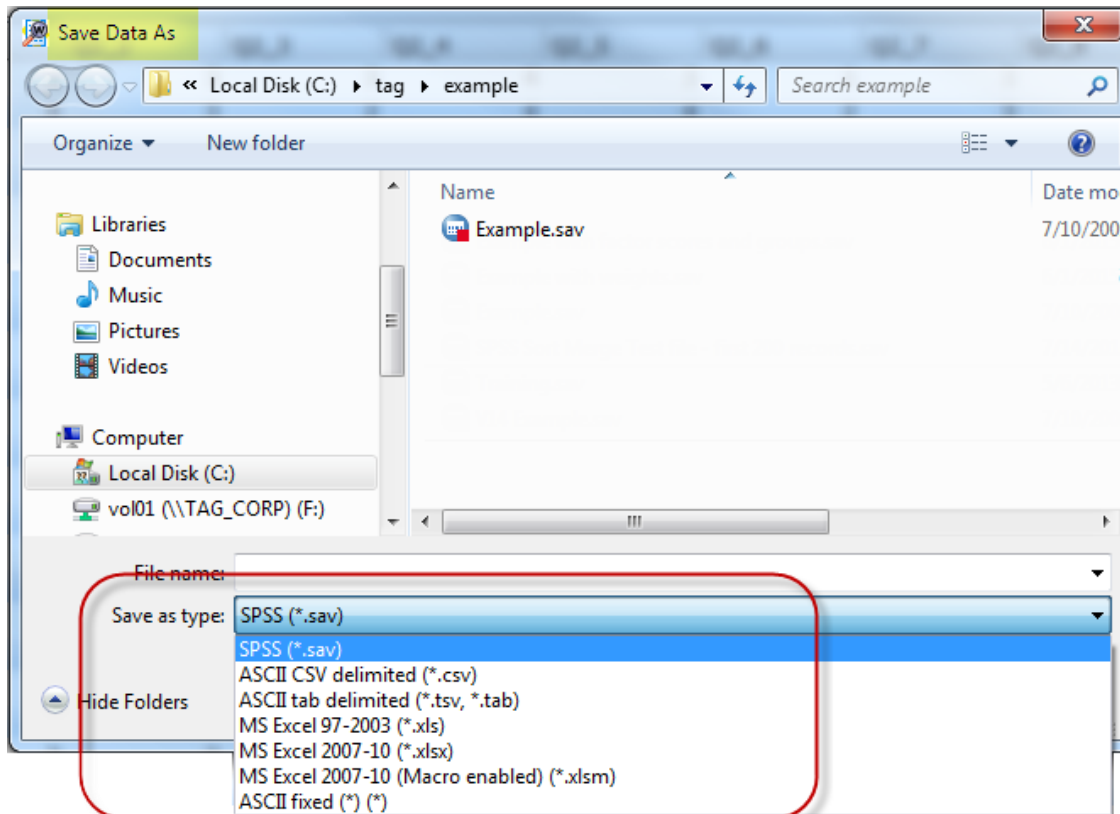


Use the new **View Data File Information** option to display the list of variables, including the **Variable Sequence Number**, **Internal WinCross Location**, **Abbreviated Variable Name**, **Variable Name from Data File** and the **Variable Label from Data File** for help in writing **Glossary** statements.

See the WinCross online **Help** topic "*Glossary Variables*" for more information about this new helpful option.

Save Variable-Type Data Files to Other Formats

File|Save|Save Data As now lets you save all variable-type data files to a new format.

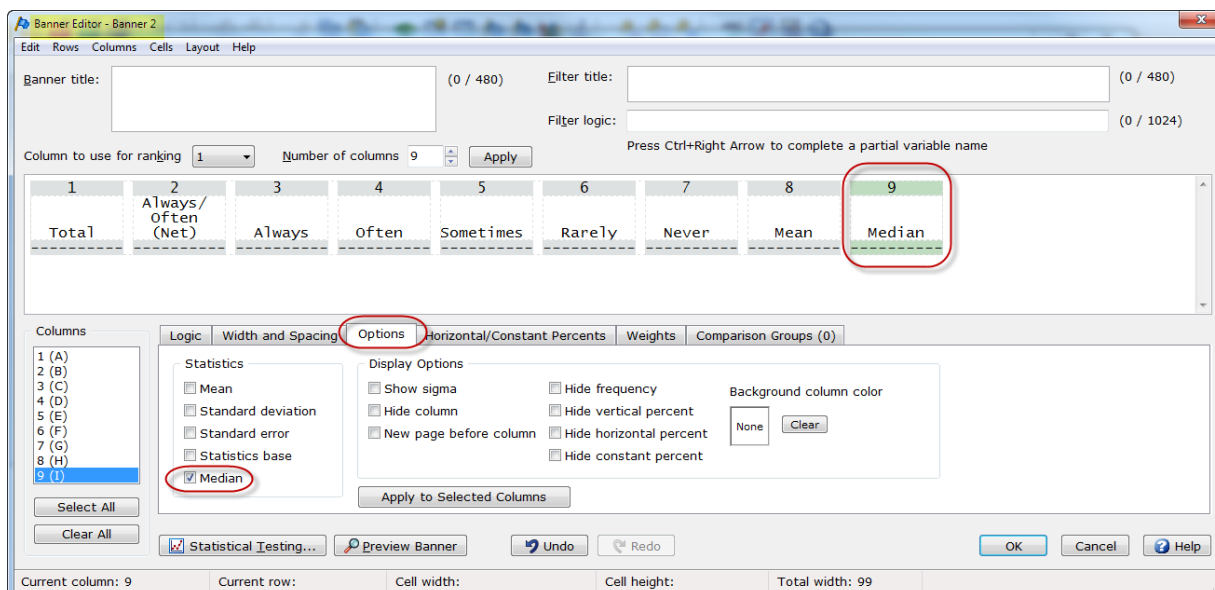


All variable-type data files can now be saved as SPSS (*.sav), ASCII CSV delimited (*.csv), ASCII tab delimited (*.tsv, *.tab), MS Excel 97-2003 (*.xls), MS Excel 2007-10 (*.xlsx), MS Excel 2007-10 (*Macro enabled*) (*.xlsm) or ASCII fixed (*.*) (*) format. When the data file is saved as a new format, the new file is saved and then opened in WinCross.

See the WinCross online **Help** topic “Save Data As” for more information about saving data.

Median Statistic Option Added for Banner Columns

Median has been added to the list of **Statistics** available on the **Options** tab of the **Banner Editor**.



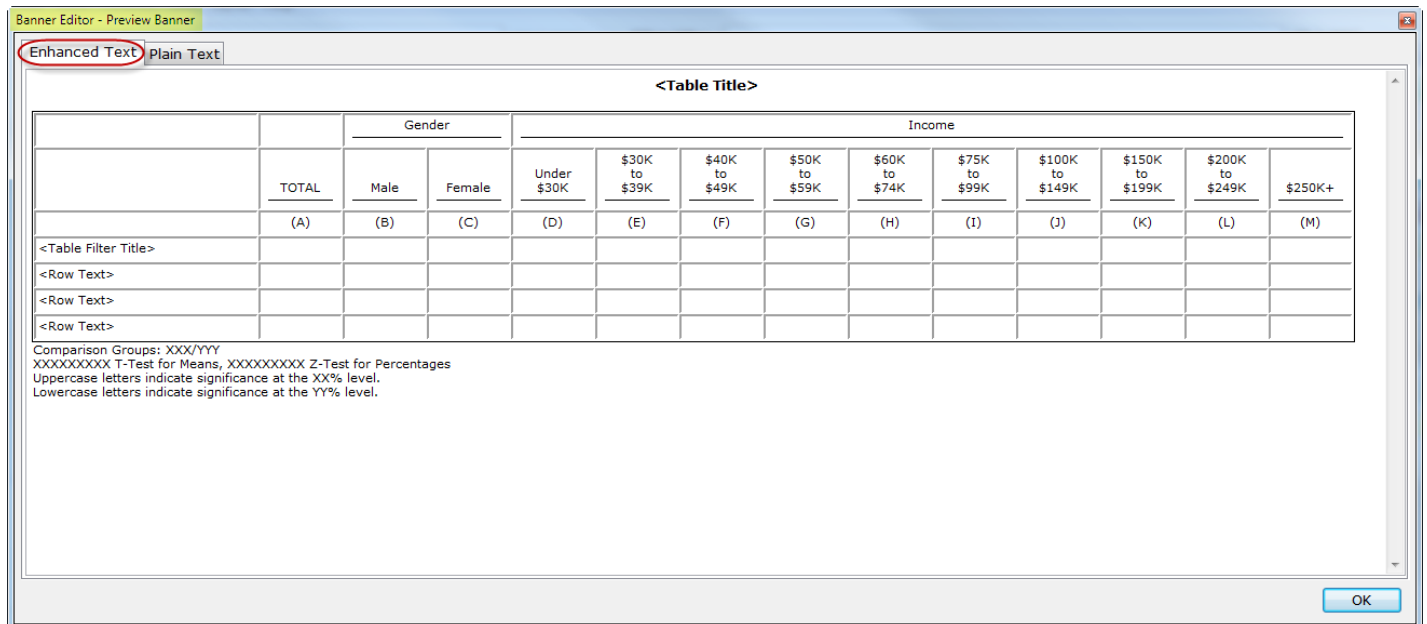
You can define a banner column using the **Median** statistic to report the middle value of all values specified.

When tables are converted to banners using **Create Banners from Tables**, **Median** rows will now become **Median** banner columns. The **Median** row will only convert to a **Median** banner column if it is defined as a **Median** using **Row Options**.

See the WinCross online **Help** topics "*Options tab (Edit Banner)*", "*Create Banners from Tables*" and "*Row Options*" for more information about using this new banner statistic.

Enhanced Text Banner Preview

The **Preview Banner** option of the **Banner Editor** has added a new tab that lets you preview your banner in **Enhanced Text** view.



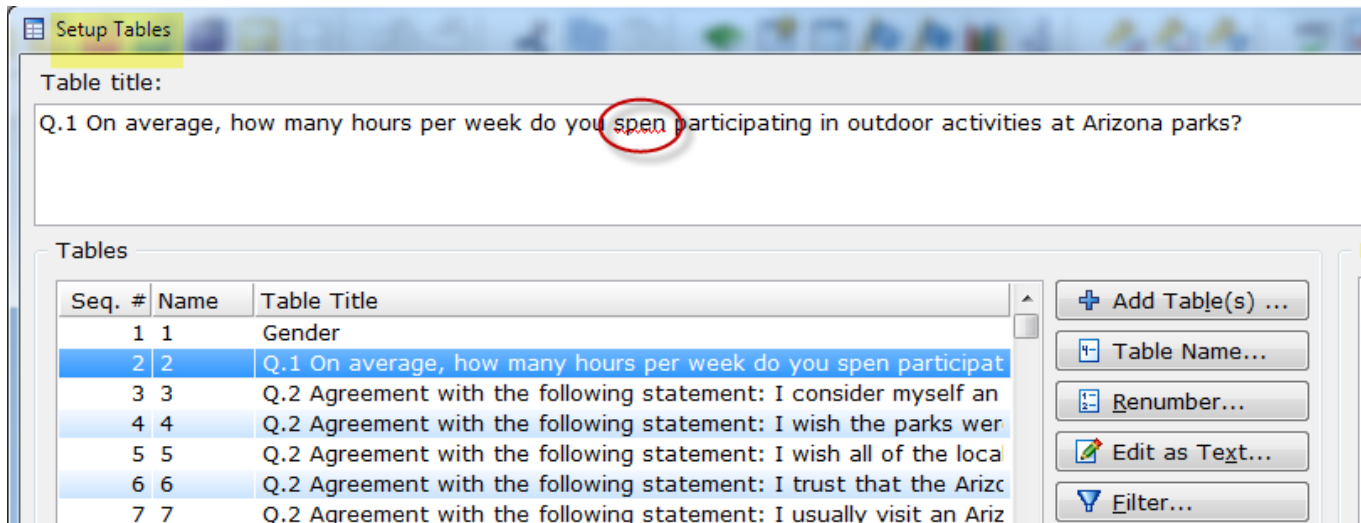
This **Enhanced Text** preview of the banner displays how your banner will look when using the **Report viewing format** of **Enhanced text report** on the **Run Tables** dialog.

Choose the **Plain Text** tab to preview the banner as it looks when using the **Report viewing format** of **Plain text report**.

See the WinCross online **Help** topic "*Preview Banner (Edit Banner)*" for more information about previewing a banner.

Misspelling Alerts

Many dialogs in the WinCross interface will now alert you to possible misspellings in table titles, filter titles, subtitles, footnotes, etc.



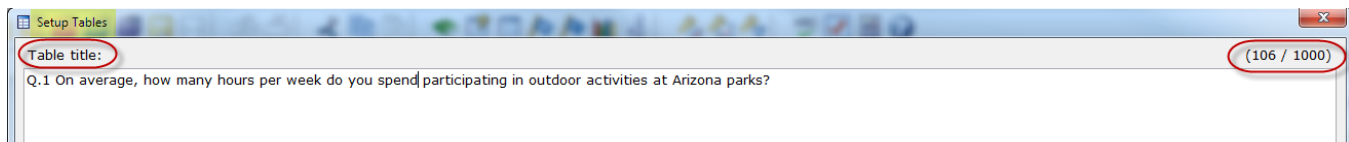
A possible misspelling is underlined with a red squiggly line as the alert.

If you do not want to be alerted to possible misspellings, there is a new option in **Tools|Program Options** to allow you to disable this new spelling checking feature.

See the WinCross online **Help** topic "*Tools|Program Options*" for more information about this new program option.

New Character Maximum for Table Title, Subtitle and Footnote

The maximum number of characters for **Table title**, **Subtitle** and **Footnote** has been increased to 1000 characters.



When table titles, subtitles and footnotes are entered using the WinCross interface, a counter is maintained indicating how many characters have been entered.

See the WinCross online **Help** topics "*Table title*", "*Subtitle*" or "*Footnote*" for more information about entering table titles, subtitles and footnotes.

New symbols for Incrementing/Excluding Logic for VAR+/LOC+ Banners and Tables

For VAR+/LOC+ banners, table row and filter logic can be *incremented* by enclosing logic inside the following characters [+].....[+].

Example 1:

[+]Q2A (1) AND Q3A (1)[+]

would increment *both* Q2A and Q3A

Example 2:

[+]Q2A (1)[+] AND Q3A (1)

would increment *only* Q2A

For VAR+/LOC+ banners, table row and filter logic can be *excluded* from being incremented by enclosing logic inside the following characters [X].....[X].

Example 1:

[+]Q2A (1) OR Q3A (1) OR [X]Q4A (1)[X] OR Q5A (1)[+]

would increment Q2A, Q3A and Q5A and exclude Q4A from being incremented

For VAR+/LOC+ tables, banner column logic can be *incremented* by enclosing logic inside the following characters [+].....[+].

Note: Banner filter logic is *never* incremented.

Example 1:

[+]Q2A (1) AND Q3A (1)[+]

would increment *both* Q2A and Q3A

Example 2:

[+]Q2A (1)[+] AND Q3A (1)

would increment *only* Q2A

For VAR+/LOC+ banners, banner column logic can be *excluded* from being incremented by enclosing logic inside the following characters [X].....[X].

Example 1:

[+]Q2A (1) OR Q3A (1) OR [X]Q4A (1)[X] OR Q5A (1)[+]

would increment Q2A, Q3A and Q5A and exclude Q4A from being incremented

See the WinCross online **Help** topic "*Incrementing logic for VAR+/LOC+ banners and tables*" for more information about using these new symbols.

New symbols for Including Logic in Row/Column Statistics

For table row statistics, table row logic can be *included* in the calculations for row statistics by enclosing the logic you want to include inside the following characters [S].....[S].

Example 1:

^[S]Q2A (1-99)[S] AND Q3A (1)^SM

would *only* include Q2A (1-99) in the calculation for row mean

Example 2:

^GENDER (1) AND Q22A (1) AND [S]Q33A (1-10)[S]^SM

would *only* include Q33A (1-10) in the calculation for row mean

For banner column statistics, banner column logic can be *included* by enclosing the logic you want to include inside the following characters [S].....[S].

Example 1:

^[S]Q2A (1-99)[S] AND Q3A (1)^SM

would *only* include Q2A (1-99) in the calculation for column mean

Example 2:

^GENDER (1) AND Q22A (1) AND [S]Q33A (1-10)[S]^SM

would *only* include Q33A (1-10) in the calculation for column mean

See the WinCross online **Help** topic “*Including logic for row/column statistics*” for more information about using these new symbols.

New symbols for Including Logic in Volumetric Rows

For volumetric table rows, table row logic can be *included* in volumetric calculations by enclosing the logic you want to include inside the following characters [V].....[V].

Example 1:

^[V]Q6_1 (0-99)[V] AND Q7_1 (1)^VO

would *only* include Q6_1 (0-99) in the volumetric calculation for the row

Example 2:

^[V]Q6A (1-10) AND Q7A (1-10)[V]^VO

would include *both* Q6A (1-10) and Q7A (1-10) in the volumetric calculation for the row

Example 3:

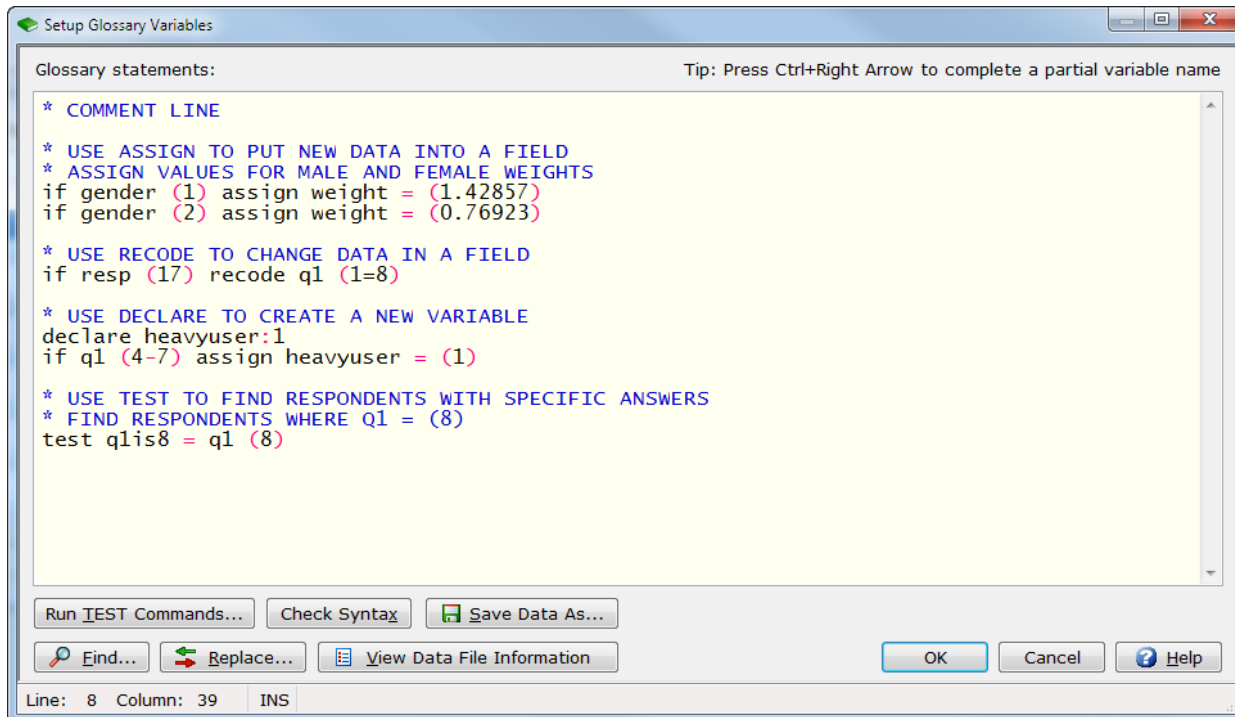
^GENDER (1) AND Q5_1 (1) AND [V]Q33A (1-10)[V]^VO

would *only* include Q33A (1-10) in the volumetric calculation for the row

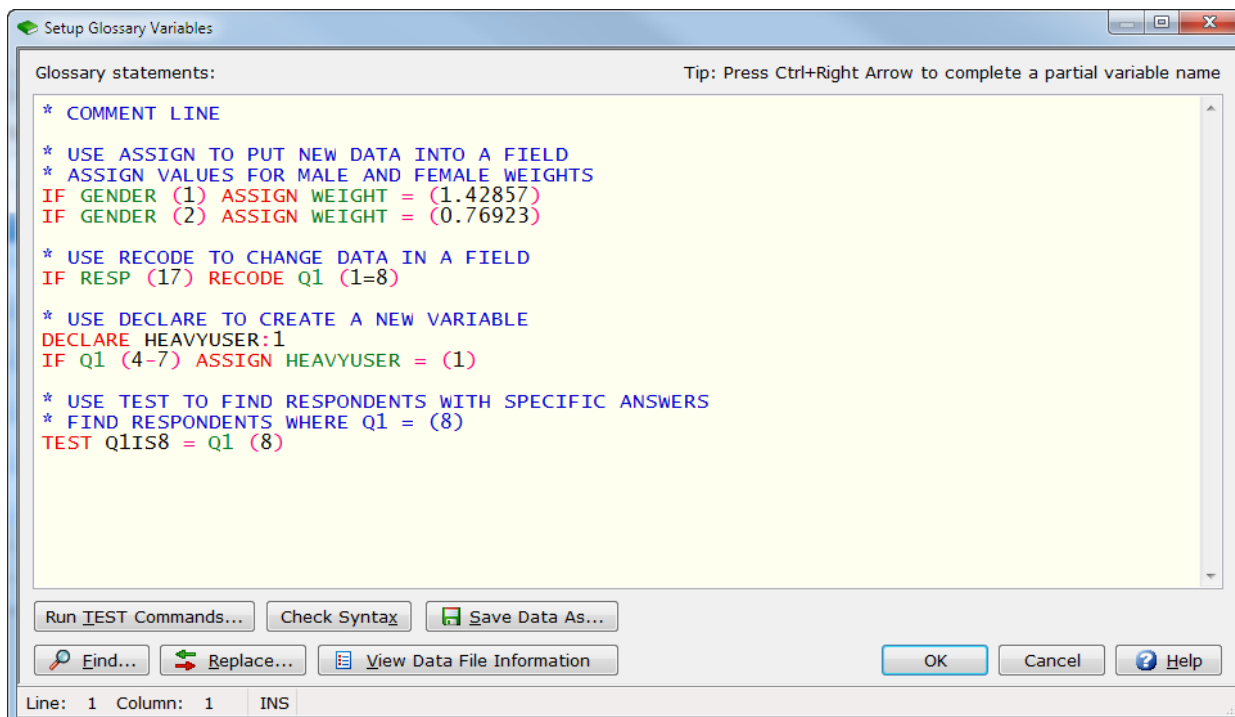
See the WinCross online **Help** topic “*Including logic for volumetric rows*” for more information about using these new symbols.

Enter Glossary Statements Without Regard to Case

Glossary statements can now be entered in lowercase.



WinCross will convert the lowercase statements to uppercase upon exit from the **Setup Glossary Variables** dialog.



For purposes of using the **Run TEST Commands** and **Check Syntax** options, the **Glossary** statements will be interpreted as uppercase. You will not see the uppercase conversion until you exit the **Setup Glossary Variables** dialog and reenter the dialog or use **View|Job File**.

See the WinCross online **Help** topic "*Glossary Variables*" for more information about using **Glossary** statements.

Data Transformations Applied Report Status

WinCross now provides a status for reports indicating whether the banners processed were weighted and if glossary transformations were applied.

The screenshot shows a window titled "Enhanced Text Report: Tables" displaying a table of contents for "Arizona Parks and Recreation Study". The table lists 13 tables with their respective page numbers and descriptions. At the bottom of the window, the status bar shows "Line: 1 Column: 1 INS Tables completed: 69 Elapsed time: 0h 0m 1s" and a red circle highlights the text "Data transformations applied".

TABLE OF CONTENTS		
Banner 1 (For tables 1-64)		
Table 1	Page 1	Gender
Table 2	Page 2	Q.1 On average, how many hours per week do you spend participating in outdoor activities at Arizona parks?
Table 3	Page 4	Q.2 Agreement with the following statement: I consider myself an outdoors person
Table 4	Page 6	Q.2 Agreement with the following statement: I wish the parks were open for longer hours
Table 5	Page 8	Q.2 Agreement with the following statement: I wish all of the local parks in Arizona had after school programs for kids
Table 6	Page 10	Q.2 Agreement with the following statement: I trust that the Arizona Parks and Recreation staff are well-trained
Table 7	Page 12	Q.2 Agreement with the following statement: I usually visit an Arizona park at least once a week
Table 8	Page 14	Q.2 Agreement with the following statement: I wish all hiking paths in Arizona parks were paved
Table 9	Page 16	Q.2 Agreement with the following statement: I enjoy visiting the Arizona Parks and Recreation visitor centers
Table 10	Page 18	Q.2 Agreement with the following statement: I like being able to reserve ramadas at Arizona parks for family gatherings
Table 11	Page 20	Q.2 Agreement with the following statement: I love the bike trails in some Arizona parks
Table 12	Page 21	Q.2 Agreement with the following statement: I hope that more parks are built as the population of Arizona grows
Table 13	Page 23	Q.2 Agreement with the following statement (Mean Summary):

For the **Tables** report, you can click on the **Data transformations applied** status to open the **Report Log** where banner and **Glossary** information is provided.

The screenshot shows a window titled "Report Log" with search controls and a list of statistics. A yellow highlight covers the glossary information section.

Find: ERROR: Find Next Find Previous Match case Match whole words

Records per case: 1
 Total cases run: 400
 Total # of banners: 6
 Total # of banner columns: 55
 Total # of rows: 619
 Total # of tables: 69
 Total # of pages: 128
 Average # rows per table: 53.83
 Weights ignored: No
 Total # of significant differences: 2908

Glossary has been applied.
 Banner 1 (For tables 1-64) is weighted with WEIGHT.
 Banner 2 (For table 65) is unweighted.
 Banner 3 - VAR+ (For table 66) is weighted with WEIGHT.
 Banner 4 - Indexing (For table 67) is unweighted.
 Banner 5 - Indexing (For table 68) is unweighted.
 Banner 6 - Indexing (For table 69) is unweighted.

Line: 1 Column: 1 INS

Other reports, such as the **Frequency**, **Sample Balancing** and **Factor Analysis** reports, provide the information in the status bar of the report dialog.

Enhanced Text Report: Frequency

Page 1
 Arizona Parks and Recreation Study
 File: C:\tag\wc16 testing\Testing 11-10-15\Example.sav
 Tuesday, Nov 10 2015 11:20:49
 Weighting (WEIGHT) and glossary have been applied

Q1 - Q.1 On average, how many hours per week do you spend participating in outdoor activities at Arizona parks?

Value Label - Code Value	Frequency	Sumx	Pct.	Cum. Pct.
1-3 hours per week - 2	*54	108	13.5	13.5
4-6 hours per week - 3	*98	403	24.5	38.0
7-9 hours per week - 4	*52	613	13.1	51.0
10-15 hours per week - 5	*69	957	17.1	68.2
16-20 hours per week - 6	*32	1147	7.9	76.1
More than 20 hours per week - 7	*95	1814	23.7	99.8
8	*1	1820	0.2	100.0
Total	7 Values	401	1820	100.0

Mean 4.53
 Standard Deviation 1.778
 Standard Error 0.003

Line: 1 Column: 1 INS Glossary applied Weighted by: WEIGHT

See the WinCross online **Help** topic "*Run/Tables*" for more information about viewing this new **Report Log** information.

Compatibility with Latest Version of SPSS

WinCross 16 is compatible with SPSS version 23. For compatibility with WinCross, we recommend saving files in SPSS using **Locale (code page) encoding**.